

PROCUREMENT OF SMALL WORKS

Request for Quotations



October 2020

This document is subject to copyright.

This document may be used and reproduced for non-commercial purposes only. Any commercial use, including without limitation reselling, charging to access, redistribute, or for derivative works such as unofficial translations based on this document is not allowed.

Revisions

October 2020

This revision includes provisions to reiterate eligibility, including conflict of interest. A few other editorial enhancements have also been made.

Preface

This Standard Request for Quotations (SRfQ) for Small Works has been prepared for use in contracts financed by the International Bank for Reconstruction and Development (IBRD) and the International Development Association (IDA).¹ It modifies the Bank's Standard Request for Bids for Small Works document in order **to support the procurement of Small Works.**

Recognizing the characteristics of emergency procurement, this streamlined procurement document has relevant features that should enable its use for contract amounts, as agreed with the Bank, that exceed the normal thresholds for Request for Quotations method.

Even if aspects such as conflict of interest and eligibility of the firms, in accordance with the Procurement Regulations for IPF Borrowers, must be confirmed by Borrowers when deciding to invite a selected few firms to submit quotations, the October 2020 version further reiterates these aspects in the Request for Quotations.

This SRfQ can be used for the procurement of works of admeasurement (unit price or rate) or lump-sum. Lump-sum contracts are used in particular for buildings and other forms of construction where the Works are well defined and are unlikely to change in quantity or specification, and where encountering difficult or unforeseen site conditions is unlikely. For lump-sum contracts, priced "activity schedules" are included, to enable payments to be made on the basis of percentage completion of each activity.

To obtain further information on procurement under World Bank-funded projects or for question regarding the use of this SRfQ, contact:

Chief Procurement Officer
Standards, Procurement and Financial Management Department
The World Bank
1818 H Street, NW
Washington, D.C. 20433 U.S.A.
<http://www.worldbank.org>
e-mail: Elaurentiis@worldbank.org

¹ IBRD and IDA are generally called the World Bank. Since the procurement requirements for IBRD and IDA are identical, "World Bank" in this SPD refers to both IBRD and IDA, and "loan" refers to either an IBRD loan or an IDA credit.

Request for Quotations

Procurement of:

SMALL WORK

Country: Pakistan

Project Name: Sindh Early Learning Enhancement through Classroom Transformation
(SELECT)

Administrative Department: School Education & Literacy Department(SE&LD), Government of Sindh, Project Management and Implementation Unit (PMIU) at Reform Support Unit (RSU).

Loan No./Credit No./ Grant No.: TF0B6208-PK

Project ID No: P172834

Contract Title: Hiring of contractor to execute small works to remodel and establish office space (Procurement of Small Work)

STEP Reference No.-PK-RSU-SINDH-365306-CW-RFQ

Issued on:

SPN Publication Date: 30th August

Last date for Submission of quotation: 15th September 2023

Table of Contents

| | |
|---|-------------------------------------|
| Request for Quotations..... | 4 |
| ANNEX 1: Works Requirements..... | 9 |
| ANNEX 2: Quotation Forms | Error! Bookmark not defined. |
| ANNEX 3: Contract Forms..... | 22 |

Request for Quotations

RFQ Ref No. PK-RSU-SINDH-365306-CW-RFQ

RFQ Date: 30th August 2023

To: _____ *[insert Contractor's name]*

Dear: *[insert name of Contractor's representative]*

Request for Quotation (RFQ)

1. This RFQ is for the procurement of Small Works such as establishment of PMIU-II required for the PMIU-II staff to speed up the project.

The Islamic Republic of Pakistan has received financing from the World Bank (the Bank) toward the cost of the Sindh Early Learning Enhancement through Classroom Transformation (SELECT), School Education & Literacy Department Govt Of Sindh and intends to apply part of the proceeds toward payments under the contract for **Remodeling & Establishment of Office Space (PMIU-II)**.

2. The Sindh Early Learning Enhancement through Classroom Transformation (SELECT), School Education & Literacy Department Govt Of Sindh now invites quotations from Contractors/Supplier for the work described in Annex 1: Works Requirements, attached to this RFQ.

Fraud and Corruption

1. The Bank requires compliance with the Bank's Anti-Corruption Guidelines and its prevailing sanctions policies and procedures as set forth in the WBG's Sanctions Framework, as set forth in Appendix A to the Contract Conditions.
2. In further pursuance of this policy, Contractors shall permit and shall cause their agents (where declared or not), subcontractors, subconsultants, service providers, suppliers, and personnel, to permit the Bank to inspect all accounts, records and other documents relating to the RFQ and Contract performance (in the case of award), and to have them audited by auditors appointed by the Bank.

Eligible Materials, Equipment and Services

3. The materials, equipment and services to be supplied under the Contract and financed by the Bank may have their origin in any country subject to Para. 9. At the Employer's request, Contractors may be required to provide evidence of the origin of materials, equipment and services.

Eligible Contractors

4. In case the Contractor is a joint venture (JV), all members shall be jointly and severally liable for the execution of the entire Contract in accordance with the Contract terms. The JV shall

nominate a representative who shall have the authority to conduct all business for and on behalf of any and all the members of the JV during the Request for Quotations process and, in the event the JV is awarded the Contract, during contract execution.

5. A Contractor may have the nationality of any country, subject to the restrictions pursuant to paras. 8 and 9 hereinafter. A Contractor shall be deemed to have the nationality of a country if the Contractor is constituted, incorporated or registered in, and operates in conformity with, the provisions of the laws of that country, as evidenced by its articles of incorporation (or equivalent documents of constitution or association) and its registration documents, as the case may be. This criterion also shall apply to the determination of the nationality of proposed subcontractors or subconsultants for any part of the Contract including Related Services.
6. Firms and individuals may be ineligible if so indicated in para.9 below and:
 - (a) as a matter of law or official regulations, the Borrower's country prohibits commercial relations with that country, provided that the Bank is satisfied that such exclusion does not preclude effective competition for the supply of goods or the contracting of works or services required; or
 - (b) by an act of compliance with a decision of the United Nations Security Council taken under Chapter VII of the Charter of the United Nations, the Borrower's country prohibits any import of goods or contracting of works or services from that country, or any payments to any country, person, or entity in that country.
7. In reference to paras. 5 and 7, for the information of Contractors, at the present time firms, goods and services from the following countries are excluded from this procurement process:
 - (a) Under para. 5 and 8 (a): *[insert a list of the countries following approval by the Bank to apply the restriction or state "none"]*.
 - (b) Under para. 5 and 8 (b): *[insert a list of the countries following approval by the Bank to apply the restriction or state "none"]*
8. A Contractor that has been sanctioned by the Bank, pursuant to the Bank's Anti-Corruption Guidelines, in accordance with its prevailing sanctions policies and procedures as set forth in the WBG's Sanctions Framework as described in the appendix to the Contract Conditions (Appendix A) paragraph 2.2 d., shall be ineligible to submit Quotations or be awarded or otherwise benefit from a Bank-financed contract, financially or otherwise, during such period of time as the Bank shall have determined. A list of debarred firms and individuals is available on the Bank's external website: <http://www.worldbank.org/debarr>.
9. Contractors that are state-owned enterprises or institutions in the Employer's country may be eligible to compete and be awarded a Contract(s) only if they can establish, in a manner acceptable to the Bank, that they:
 - (a) are legally and financially autonomous;
 - (b) operate under commercial law; and
 - (c) are not under supervision of the Employer.
10. A Contractor shall not have a conflict of interest. Any Contractor found to have a conflict of interest shall be disqualified. A Contractor may be considered to have a conflict of interest for the purpose of this Request for Quotations process, if the Contractor:

- (a) directly or indirectly controls, is controlled by or is under common control with another Contractor that submitted a Quotation;
- (b) receives or has received any direct or indirect subsidy from another Contractor that submitted a Quotation;
- (c) has the same legal representative as another Contractor that submitted a Quotation;
- (d) has a relationship with another Contractor that submitted a Quotation, directly or through common third parties, that puts it in a position to influence the Quotation of another Contractor, or influence the decisions of the Employer regarding this Request for Quotations process; or
- (e) or any of its affiliates participated as a consultant in the preparation of the design or technical specifications of the works that are the subject of the Request for Quotations process; or
- (f) or any of its affiliates has been hired (or is proposed to be hired) by the Employer or Borrower for implementing the Contract; or
- (g) would be providing goods, works, or non-consulting services resulting from, or directly related to consulting services for the preparation or implementation of the project specified in this Request for Quotations, that it provided or were provided by any affiliate that directly or indirectly controls, is controlled by, or is under common control with that firm; or
- (h) has a close business or family relationship with a professional staff of the Borrower (or of the project implementing agency, or of a recipient of a part of the loan) who: (i) are directly or indirectly involved in the preparation of the Request for Quotations or specifications and/or the evaluation of Quotations, of the subject Contract; or (ii) would be involved in the implementation or supervision of such Contract unless the conflict stemming from such relationship has been resolved in a manner acceptable to the Bank throughout the Request for Quotations process and execution of the Contract.

Performance Security

11. Not Applicable

Validity of Quotations

12. The quotations shall be valid until 120 days

Price

13. The Contractor shall quote its total price in the Contractor's Quotation Form.

14. The Contractor shall also fill in its rates and prices for all items of the Works described in the attached Bill of Quantities. Items against which no rate or price is entered by the Contractor will not be paid for by the Employer when executed and shall be deemed covered by the rates for other items and prices in the Bill of Quantities.

15. The rates and prices shall include all duties, taxes, and other levies payable by the Contractor under the Contract, as of the date 7 (seven) days prior to the deadline for submission of quotations

Technical proposal

16. The Contractor shall furnish a technical proposal including a statement of work methods, equipment, personnel, schedule and any other relevant information, in sufficient detail to demonstrate the adequacy of its proposal to meet the work's requirements and the completion time.

Clarifications

17. Any clarification request regarding this RFQ may be sent in writing to Mr. Muhammad Suhail Baloch having email junee23@hotmail.com, before **5th September 2023**. The Employer will forward copies of its response to all Contractors including a description of the inquiry but without identifying its source.

Submission of Quotations

18. Quotations are to be submitted in the form attached at Annex 1 **hard copy only**.
19. The deadline for submission of Quotations is **15th September 2023 at 1:00pm**
20. The address for submission of Quotations is:

Attention: Mr. Junaid Hameed Samo (Project Coordinator)

Address: Project Coordinator office for Sindh Early Learning Enhancement through Classroom Transformation SELECT AT Reform Support Unit 47-E/1, Street No. 48, PECHS Block-6, Near Nursery Furniture Market, Shahrah-e-Faisal, Karachi.

Tel: 021-34304441

E-mail: PMIUSELECT.SELD@gmail.com

Opening of Quotations

21. Quotations will be opened by the Employer's representatives immediately after the deadline for the submission of Quotations.

Evaluation of Quotations

22. The quotations will be evaluated to determine substantial responsiveness of the technical proposal.
23. For evaluation and comparison purposes, the currency(ies) of the Quotations shall be converted into a single currency. The currency that shall be used for comparison purposes to convert at the selling exchange rate offered prices expressed in various currencies into a single currency is: PKR The source of exchange rate shall be: State Bank Of Pakistan . The date for the exchange rate shall be: **15th September 2023**.
24. For technically compliant quotations, the total evaluated prices, excluding provisional sums and any provision for contingencies but including day works where priced competitively, will be compared to determine the lowest evaluated price/s.

Contract Award

25. The Contract will be awarded to the Contractor who meets the eligibility requirements in accordance with the RFQ, offers the lowest evaluated price/s, offers a technically compliant quotation, and guarantees completion of the Works by the specified date.

On behalf of the Employer:

Signature:

Name:

Title/position:

Attachments:

Annex 1: Works Requirements

Annex 2: Quotation Form

Annex 3: Contract Forms

**ANNEX 1: Works Requirements
Specification**

WOOD FLOORING

PART ONE: GENERAL

1.1 Summary

1.1.1 Section includes general administrative and procedural requirements governing execution for Wood Flooring for interior applications. Section includes wood products and applications, including those specified in other Sections where wood requirements are specified by reference to this Section including but not limited to, the following:

- a. Hardwood Strip and Plank Flooring
- b. Engineered Hardwood Flooring
- c. Wood Parquet Flooring
- d. Coordinated transitions and moulding pieces.
- e. Miscellaneous installation materials.

1.2 Related Documents

1.2.1 Construction Documents and general provisions of the Agreement Between Owner and Construction Manager and the Guaranteed Maximum Price (GMP) Amendment, including Division 00 General Conditions of the Contract for Construction and Supplementary Conditions and other Division 01 Specification Sections, applicable to this Section. All methods herein are to follow all applicable state and local code as well as installation standards.

1.2.2 Comply with the requirements of the various specifications and standards referred to in the contract Plans and Specifications, except where they conflict with the specific requirements of these contract Plans and Specifications. Such reference specifications and standards.

1.3 Reference Standards

Use current editions unless indicated otherwise.

1.3.1 American Society for Testing and Materials (ASTM)

- a. ASTM E 648 - Standard Test Method for Critical Radiant Flux of Floor Covering Systems Using a Radiant Heat Energy Source.
- b. ASTM E 662 (Smoke Generation) Maximum Specific Optical Density
- c. ASTM E 90 (Classified by E 413) Standard Test Method for Laboratory Measurement of Airborne Sound Transmission Loss of Building Partitions and Elements (STC)
- d. ASTM E 492 (Classified by E 989) Standard Test Method for Laboratory Measurement of Impact Sound Transmission Through Floor-Ceiling Assemblies

Using the Tapping Machine (IIC).

e. ASTM F 970 (Standard & Modified) Test Method for Static Load Limit.

f. ASTM F 710 - Standard Practice for Preparing Concrete Floors.

g. ASTM F 1869 - Standard Test Method for Measuring Moisture Vapor Emission Rate of Concrete Subfloor Using Anhydrous Calcium Chloride.

h. ASTM F 2170 - Standard Test Method for Determining Relative Humidity in Concrete Slabs Using *In-Situ* Probes.

1.3.2 National Fire Protection Association (NFPA):

a. NFPA 253 Test Method for Critical Radiant Flux of floor covering systems using a radiant energy source

b. NFPA 258 Test Method for Specific Density of Smoke Generated by Solid materials

1.3.3 American National Standard Institute (ANSI)

a. ANSI/HPVA EF 2012 American National Standard for Engineered Wood Flooring

1.3.4 Scientific Certification Services (SCS)

a. Floor Score© Indoor Air Quality Certification

1.3.5 National Wood Flooring Association (NWFA formerly NOFMA)

a. NOFMA Grading Rules

1.4 **Submittals**

1.4.1 All submittals shall be made in accordance to section 01 33 00 and as specified herein. Contractor is to submit the following to Owner and/or Consultant for approval prior to construction and fabrication:

1.4.1.1 Shop Drawings/floor layouts indicating installation methods, transitions/moulding details, manufacturer's installation instructions, and detail of additional accessory items.

1.4.1.2 Submit three (3) samples for each type of glass product as follows:

1. Submit plank width x 12" long sample of each wood type and finish.

2. Submit 6" lengths of each transition/moulding type and finish to be used for installation.

1.4.1.3 Manufacturer's Certification to verify materials comply with specified requirements and suitable for intended application.

1.4.1.4 Product data for each specified product.

1.4.1.5 Accessories: Provide chemical, functional, and environmental characteristics and special application requirements. Identify available colors where exposed.

1.4.1.6 Warranty

1.5 **Quality Assurance**

- 1.5.1** Control Samples: Wood shall match the Engineer's control samples in all respects. Control samples require the Engineer's approval before they may be used as a standard.
- 1.5.2** Ensure that products of this section are supplied to affected trades in time to prevent interruption of construction progress.
- 1.5.3** Source Limitations: Obtain each material required for any one type and color from a single source to minimize variations in appearance and quality.
- 1.5.4** All work of this Section shall be performed by skilled installers of the trade and shall be of the highest quality. Company specializing in manufacturing the products specified in this section with minimum five years of documented experience. Comply with applicable Industry Standards for all work and materials as specified. Such Industry Standards are to include but not be limited to the applicable provisions or standards in this section.
- 1.5.5** Mock-Up - Typical Floor Panel: The Contractor shall install a typical floor panel, approximately 3-feet square in an appropriate location. Mock-up shall include joint treatment and other accessories/transitions as required for a finished installation. Maintain accepted panel as the standard for completed work. Provide a typical floor panel for each different type of wood flooring and floor design indicated. Mock-up will be provided for evaluation of surface preparation techniques and application workmanship for each type using manufacturer approved installation methods. Do not proceed with production work until workmanship and finishes are approved by Architect and/or Owner and/or designer. Mock-up may remain as part of the work.

1.6 Coordination

- 1.6.1** Coordinate installation of all glazing items. Furnish shop drawings/flooring layouts, and directions for a complete installation. Deliver all required items and installation accessories to project site in time for installation.

1.7 Delivery, Storage and Handling

- 1.7.1** Deliver materials to the building site in original, unopened packages, bundles, or containers. Protect materials against dampness during shipment and after delivery. Store materials under cover in a well ventilated building where materials will not be exposed to extreme changes of temperature and humidity. Do not store materials in buildings under construction until all wet-applied building materials are dry. Do not open packages, bundles, or containers until the flooring is to be installed. Remove rejected material from the property. Keep materials wrapped and separated from off-gassing materials, such as paints and adhesives. Do not use materials that have visible moisture or biological growth.

- 1.7.2** Deliver materials only when environmental conditions meet requirements specified for installation areas. If materials must be stored in other than installation areas, store only where environmental conditions meet requirements specified for installation areas.
- 1.7.3** Deliver materials sufficiently in advance of installation to acclimate materials to the environment prior to installation if required per manufacturer's instructions.
- 1.7.4** Maintain a minimum temperature in the spaces to receive the flooring and accessories of 55°F and a maximum temperature of 75°F (or as required by manufacturer) for at least 48 hours before, during, and for 48 hours after installation. Protect all materials from the direct flow of heat from hot-air registers, radiators, or other heating fixtures and appliances. Preferred jobsite Relative Humidity shall be between 35% - 50%, not to exceed limits for optimum product performance. Ensure that permanent HVAC is in operation (minimum 14 days) along with permanent lighting prior to installation. Keep in mind that adverse fluctuations in Relative Humidity for extended periods of time may result in expansion and contraction of wood flooring leading to complaints and possible floor failure.
- 1.7.5** Install flooring and accessories after all other finishing operations and construction have been completed. Close spaces to traffic during the installation of the flooring and protect flooring surface as necessary with a breathable material after the completion of installation. Do not install flooring over concrete slabs or wood substrates until they are sufficiently dry to achieve a bond with the adhesive (especially when employing direct glue down method to substrate), in accordance with the manufacturer's recommended bond and moisture tests.

PART TWO: PRODUCTS

2.1 General

- 2.1.1** Acceptable manufacturer/supplier as specified in contract drawings and/or Interior Design drawing set and specifications or an Owner approved equal. Approved equals and/or substitutions will only be approved for Work if submitted and approved in accordance with provisions of Section 01 25 00.

2.2 Materials

- 2.2.1** All materials shall be furnished to the quality as specified in the construction drawings and in accordance with the Architect's/Interior Design specifications. All material qualities shall meet and/or exceed industry standards for the specified application.
- 2.2.2** All hardwood planks, engineered wood and parquet hardwood flooring must conform to NOFMA Grading Rules. Hardwood flooring in corridors and exits must

have a minimum average critical radiant flux of [0.22] [0.45] watts per square centimeter when tested in accordance with ASTM E648.

2.2.3 For material with factory finish use penetrating stain with top coat for high traffic use and maximum transparency.

2.2.4 Field applied stain must be penetrating type, non-fading wood stain of color required to match approved sample.

2.3 Underlayment, Transitions, mouldings

2.3.1 For added noise reduction, sound absorption, thermal insulation, and moisture barrier provide manufacturer's recommended underlayment for Floating applications.

2.3.2 Resilient / Acoustical Underlayment: moisture resistant 3 to 6 mm (1/8" to 1/4") thick closed multi-cell polyethylene resilient sheet foam or other type with density and permeability as recommended or approved by wood flooring manufacturer. Where the underlayment is required to have an acoustical rating care must be taken in the type and density of underlayment used and with manufacturer's claims in regard to noise reduction properties.

2.3.3 Provide all available coordinating transitions and moulding pieces designated for the specified wood collection to meet installation application for finishing and transitioning to other flooring products. Install in accordance with manufacturer's guidelines and intended use.

2.3.4 Treads: one-piece wood flooring complete with solid bullnose nosing by full tread width for contained (boxed) stairways.

2.3.5 Nosings: separate overlapping wood, flush wood bullnose or extruded aluminum nosing for finish flooring edge at the top of stairs. Note that overlapping nosing is secured to substrate and not to wood floor so that the floor is free to move. Verify if overlapping nosings meet code requirements before specifying.

2.3.6 Risers: matching one-piece wood by full tread width x riser height required.

2.3.7 Stringers: one-piece painted, stained wood to match wood full depth plus base height.

2.3.8 Mouldings and Trim: factory wood of species, grade, and finish to match wood flooring or pre-finished metal as selected by the Owner/Consultant in full widths, lengths, and profiles to suit conditions as required.

2.3.9 Quarter Round: wood to cover gap at walls and other fixed vertical surfaces.

- 2.3.10** Use the following to cover expansion void at wood flooring, wall openings (without doors) and where wood flooring abuts another type of floor finish:
- a.** T-Moulding - doorways or thresholds to join two areas of wood flooring
 - b.** End Caps - used at end of wood at exterior doorways.
 - c.** Reducers: Tapered to join wood flooring to other flooring materials of varying heights.
- 2.3.11** Interior Contractor shall submit samples of each underlayment, transition and moulding type to Consultant for approval.

2.4 Adhesives and Accessories

- 2.4.1** Provide manufacturer's recommended adhesive for optional glue application on Floating installations. Use of adhesive to seal and glue wood joints is not required in Commercial applications but recommended for areas that are likely subjected to topical moisture sources, as a preventative measure. See manufacturer's limitations to installation in high moisture areas in product literature.
- 2.4.2** Adhesive for Glued-Down Components: (stair treads and risers as recommended by manufacturer) high strength premium grade low VOC (solvent-free), alkaline and water resistant type specially formulated for glue-down application of wood flooring stair components (treads and risers) and to suit material and substrate types and conditions as recommended by both adhesive and wood flooring manufacturers. Spread rates for adhesive shall be strictly adhered to. Provide Adhesive for Glue Down application directly to substrate.
- 2.4.3** Substrate Filler: smooth trowelling, fast setting, non-shrinking, non-cracking, pre-mixed filler with Portland cement and polymeric modifiers (white latex) and a minimum compressive strength of 20 MPa (2900 psi) at 28 days (or 27.6 MPa (4000 psi) where wood is glued directly to substrate) for patching / filling / levelling substrates, with type to suit substrate conditions as recommended by adhesive / wood flooring manufacturer.
- 2.4.4** For moisture remediation on concrete slabs tested with ASTM method F 1869 exceeding maximum Wood requirement of 5 lbs/1000 ft²/24 hr period, not to exceed 12 lbs/1000 ft²/ 24 hr Moisture Vapor Emission Rate (MVER) use the recommended Urethane **only** adhesives for Floating and Glue down installations.

PART THREE: EXECUTION

3.1 Examination

- 3.1.1** Do not begin installation until substrates have been properly prepared.
- 3.1.2** Verify surfaces and substrates are prepared to receive products of this section.

- 3.1.3** If substrate preparation is the responsibility of another installer, notify Architect of unsatisfactory preparation before proceeding. Examine substrates and conditions, with Installer present, for compliance with requirements for installation tolerances and other conditions affecting performance of decorative metal.
- 3.1.4** Examine materials before installation. Reject materials that are defective and/or damaged.
- 3.1.5** Proceed with installation only after unsatisfactory conditions have been corrected.
- 3.1.6** Moisture and alkalinity tests shall be conducted by an independent third party testing agency using testing methods and devices in accordance with NFCA requirements and wood floor covering manufacturer's recommendations. Final moisture test results must be in compliance with industry/manufacturer's standards or meet the following:
- a.** RH In-Situ Probe test results, conducted according to ASTM F-2170, shall not exceed 85%
 - b.** Anhydrous Calcium Chloride test results, conducted according to ASTM F-1869, shall not exceed an MVER of 3 lbs./ 1000 ft² over a twenty-four (24) hour period.
 - c.** Alkalinity results shall not exceed a maximum pH rating of 7
- Report unsatisfactory conditions to Architect and/or General Contractor and correct conditions before proceeding.
- 3.1.7** Check substrate surfaces with a metal straight edge and ensure that they are free from all bumps, ridges, and other imperfections detrimental to flooring installation for level tolerances to insure they are within industry standards.

3.2 Preparation

- 3.2.1** Prepare surfaces using the methods recommended by the manufacturer for achieving the best result for the substrate under the project conditions.
- 3.2.2** Grinding or sanding of ridges, undulations, projections and areas of carbonation and scaling and filling and leveling of expansion joints, cracks, grooves and other irregularities

3.3 Installation

- 3.3.1** Verify floor direction and pattern with Interior Design consultant prior to installation.
- 3.3.2** Install wood flooring in strict accordance with flooring manufacturer's directions and to areas and patterns scheduled and detailed on drawings pre-approved shop drawings and Finish Schedules. Installation must at minimum adhere to standards as recommended by NOFMA as applicable to type of flooring required.

- 3.3.3** Vapor barrier, if required, is to be installed in accordance with the manufacturer's printed instructions. Cover slab with 6 inch lapping joints and taped complete.
- 3.3.4** For direct glue-down installations follow manufacturer's installation instructions. 100% of the substrate must be covered with adhesive to protect against damage from subfloor moisture. Spread adhesive only over surface that can be finished within cure time of adhesive. Roll floor with 150 Lbs. roller approximately 30 minutes after spreading adhesive, but not later than 60 minutes. Be sure to roll in both direction of planks. Remove excess adhesive while still fresh.
- 3.3.5** Provide expansion void at perimeter vertical interfaces (walls, millwork, adjacent floor finishes, and at openings as required) of width and in accordance with flooring manufacturer's recommendations and requirements using temporary blocking if and as required and expansion material as recommended by flooring manufacturer.
- 3.3.6** Unless otherwise indicated, install flooring symmetrically about room centre line and parallel to long dimension of room(s) and corridor(s), continuous through doorways, and cut to fit all projections, with all joints straight, true to plane, and with minimum half plank width at perimeters. Stagger end joint locations a minimum of 10 to 12" and seal all cut ends as recommended by manufacturer. When required by manufacturer install specified adhesive to wood joints in strict accordance with manufacturer's written instructions.
- 3.3.7** For a blended appearance select pieces randomly from several boxes.
- 3.3.8** For nailed or stapled wood installation methods, blind staple/nail flooring to sub floor with power driver. Use space fasteners at locations are recommended by manufacturer. Stagger end joints from row to row by a minimum of 12".
- 3.3.9** Seal perimeters of wet areas, i.e., in expansion gap under stoves, fridges, and dishwashers with a clear silicone sealant.
- 3.3.10** Install wood base (and quarter round if required) over expansion void at perimeter of flooring secured to vertical interfaces using nails in accordance with industry standards. Ensure base does not contact floor surface and is not secured to it.
- 3.3.11** Install protective edgings / reducer strips and wood thresholds to all exposed wood flooring edges and interfaces with other flooring materials as required to suit conditions, fixed as recommended by the manufacturer.
- 3.3.12** Install metal thresholds at openings and where indicated and attached to adjacent rigid floor surface. Where thresholds cover an expansion space, ensure that they are fastened to the substrate and not to wood flooring, to allow flooring to move (i.e., expand and contract) under the threshold.

3.3.13 Install wood flooring to treads and riser faces fitted tightly to adjacent wall surfaces allowing for expansion as required and install specified wood base and stringers fitted tightly to horizontal and vertical stair surfaces and to wall surfaces without gaps or voids.

3.4 Protection, Cleaning and Repairs

3.4.1 Protect installed work with Kraft paper or other heavy covering during construction period to prevent staining, damage, and wear. If recommended by manufacturer.

3.4.2 Prohibit foot and wheel traffic from floors for at least 24 hours after completion.

3.4.3 Before final inspection, remove protective coverings and clean floor surfaces.

3.4.4 Remove and replace any items which are broken, chipped, cracked, or abraded or that is damaged from natural causes, accidents, and vandalism, during construction period.

ROOF COVERINGS AND ROOF TREATMENTS

This section consists of following sub sections:-

1. Roof Coverings
2. Water Proofing Treatment
3. Roof Insulation

ROOF COVERINGS

This sub section consists of roof coverings of Corrugated Galvanized Iron (CGI), Mild Steel (MS), Fibre Glass, corrugated and plain sheets, including Ridge gutter and rain water pipes.

MATERIAL REQUIREMENTS

Corrugated Steel Sheeting

The Sheets to be made of tough mild steel, well annealed, even in temper and thickness, free from holes, cracks, blisters and other defects.

The sheets to be perfectly rectangular, the corrugations parallel with the sides and regular in curve, pitch and depth, and the average weight of any ten sheets to be within 7.5% margin of the weights given in Para10.1.1.3.

The weight of steel sheet before galvanizing shall be as given below:-

| | | |
|--------------------------------------|---|--------------------|
| No.24 BG, weight of girthed surface | - | 4.924 Kg per Sqm. |
| No. 22 BG, weight of girthed surface | - | 6.247 Kg per Sqm. |
| No. 20 BG, weight of girthed surface | - | 7.809 Kg per Sqm. |
| No. 18 BG, weight of girthed surface | - | 9.760 Kg per Sqm. |
| No. 16 BG, weight of girthed surface | - | 12.490 Kg per Sqm. |

The allowance for increase in weight by galvanizing shall be 610 gm/ Sqm of girthed surface.

Galvanized steel sheets shall be thoroughly and evenly coated with Zinc, and be free of stains, bare spots and other defects.

When not galvanized, all sheets are coated immediately after manufacture with one coat of oil paint, applied by dipping or brushing over the whole of the surface of each sheet.

The corrugations are to be of standard pattern.

Sloping Pattern Roofing.

The side edges of sheets shall be formed to a true curve. Rolls be 75 mm in dia and of the gauge, same as of sheeting.

Plain Steel Sheeting.

Shall be of the quality, specified for corrugated steel sheeting.

Single / Twin Wall Corrugated PVC Roof Sheet.

It is a superior product for residential, industrial, commercial, agricultural and educational projects. Typical design is shown at figure 10-1. It is exceptionally weatherresistant and its technical specifications are given at Table 10-1:-

TABLE 10-1

| Specifications | PVC Single Wall Corrugated Sheets | PVC Twin Wall / Hollow Corrugated Sheets |
|-------------------|--|--|
| Width (Effective) | 1000mm | 1000mm |
| Sectional Height | 34mm | 42mm |
| Standard Length | 5.8m & 11.8m | 5.8m & 11.8m |
| Thickness | 2 to 3 mm | 11.10mm |
| Purlin Distance | 1.0 m | 1.2 m |
| Weight | +4.2Kg/m ² | +5Kg/m ² |
| Basic Material | UPVC with UV Protection Embedded | PVC with UV Protection Embedded |
| Specifications | PVC Single Wall Corrugated Sheets | PVC Twin Wall / Hollow Corrugated Sheets |
| Standard Colors | Blue, White, Gray, Green & Red | Blue, White, Gray, Green & Red |
| Types | Opaque & Semi Transparent Sheets | Opaque & Semi Transparent Sheets |
| Coating | ASA with 10 years Color Fading & 25years Structure Life Warranty | ASA with 10 years Color Fading & 25years Structure Life Warranty |

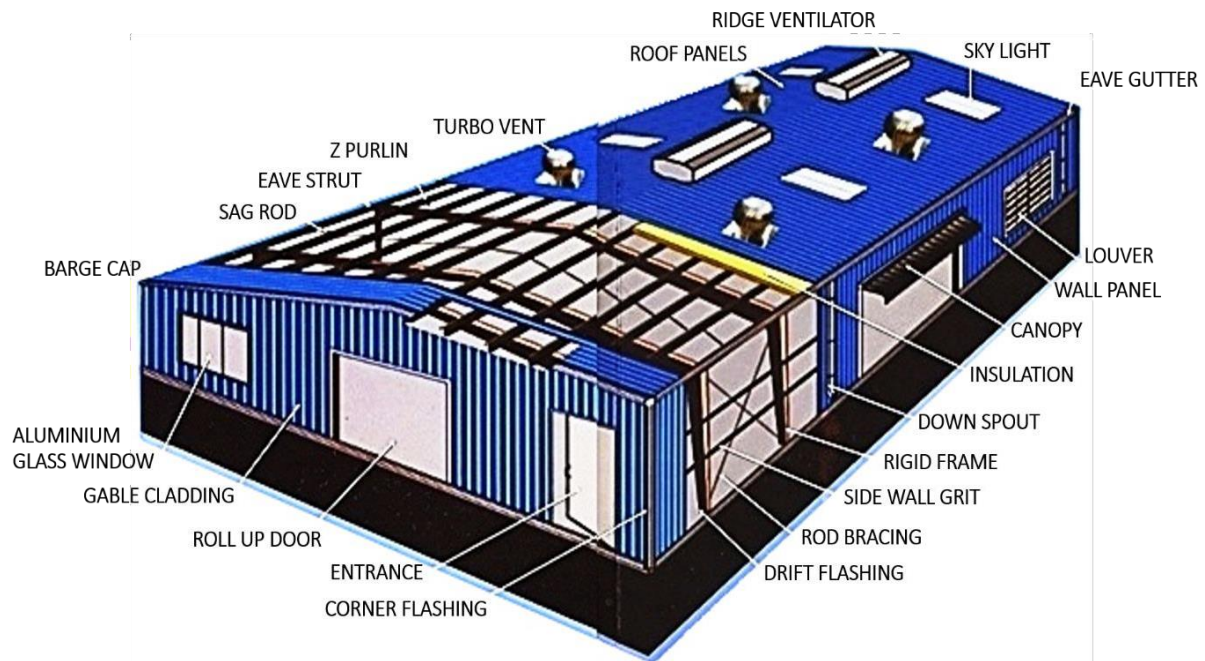


FIGURE : 10-1

CONSTRUCTION REQUIREMENTS

Corrugated Sheeting.

Sheet be fixed with galvanized screws or bolts, fiber and galvanized curved or limpet washers at a spacing not exceeding 300 mm centres in case of 8/3 corrugation sheets and at not exceeding 380 mm centres for 10/3 corrugation sheets on every bearer.

Sloping Pattern Roofing

Sheets shall be fixed with one screw at top center, three iron clips 75 mm x19 mm x 6 mm at each edge joint fixed with two screws 40 mm long and one center clip to bottom of sheet at eaves. Rolls shall be fixed with one screw at top. The sheet shall have an end lap of 150 mm.

Batman and Le Mesurier or other types of plain sheet roofing with roll side joints shall be similar to Sloping Pattern Roofing except for such modification as each type necessitates.

METHOD OF MEASUREMENTS

Measurements.

The net superficial area of sheeting, as fixed, is to be measured on the flat (not girthed corrugations) without any extra allowance for laps or welts.

Cutting.

Sheet cut to shape (as in stepped flashing) shall be measured overall, least dimension out of which the sheet can be cut.

Openings.

No deductions shall be made for opening of any shape not exceeding 0.4 Sqm.

CLARIFICATION OF RATES

The rates, inter alia, include particularly:-

All screws, bolts and washers in any position.

All cutting and waste

Jointing to gutters and pipes.

Labour in reducing to size, shape, figure, etc., and all straight, raking and circular cutting, waste, labour and materials in rolls, welts, seams, etc.

WATER PROOFING TREATMENT

This sub-section consists of water proofing treatment i.e. felts, building paper, bitumen coating and membranes.

MATERIAL REQUIREMENTS

Bitumen Felt.

Shall be of specified thickness and type. Samples along with relevant literature will be submitted to the Engineer-in-Charge for obtaining approval, before the start of work at site.

Primer.

It shall conform to ASTM D-41.

Bitumen.

It shall conform to ASTM D-312 type-III, Bitumen Grade 10 / 20 PB 4.

Building Paper.

Water proof building or insulating paper shall be of best quality with specified weight, stout, strong and thoroughly impregnated with water proof composition.

Membranes.

Shall be of specified thickness and type. Samples along with relevant literature will be submitted to the Engineer-in-Charge for obtaining approval, before the start of work. Following types are generally available in the market with various brand names:-

Bitumen Based Membrane.

Modified Bituminous Membrane is a torch bonding flexible waterproof sheet that consists of a very strong non-woven polyester reinforcement, coated on both sides with Modified Bitumen compound. The upper and lower surfaces are covered with Poly Ethylene film. It is also available in a variety of surface finishes for both covered and exposed applications. It is normally available in size of one metre (1M) wide sheet in 3mm and 4mm thickness. The jointing and bonding is done by using Propane gas torch. The material shall meet the requirements of ASTM D446, Heat resistant upto 1300C and have Tensile strength of 800 N / sq cm.

Acrylic / Polymer / Synthetic Vinyl (PVC) Flexible Membrane.

It is composed of Synthetic Polymer Resins, plasticizers and pigments. It is synthetic Vinyl, a highly flexible and stable material, useful for application as a water barrier, where required. It can be jointed with different types of materials thermally / chemically. It is available in the form of sheets in thickness varying from 0.25mm to 2mm. Application and jointing shall be as per Manufacturer's instructions.

Elastomeric Cementitious Water Proof Coating.

It is a cementitious mix of two components, a powder and a liquid. It is available in various sizes of packing. Once mixed, it forms an Elastomeric paste which can be sprayed or applied with a brush, keeping the ratio of mix accordingly. Once hardened, it requires mechanical means for removal.

Admixtures / Construction Chemicals.

Various brands of admixtures are available in the market. These may only be used in accordance with the requirements specified in Para 3.6. The exact type and nomenclature will be decided by the designer and approved by the Engineer-in-Charge. However, some of the locally available types are highlighted below for reference only.

Latex

is a Carboxylated Styrene Butadiene Copolymer. Latex admixture is designed as an integral adhesive for cement bond coats, mortar and concrete to improve bond strength and chemical resistance.

Superplast Super Plasticizer

is an advanced organic polymer dispersant, used to modify Portland cement grout or concrete.

Water Proofing powder

is a balanced blend of stearate water repellent and other chemicals, which once used as admixture, forms an internal barrier against water penetration.

CONSTRUCTION REQUIREMENTS

General.

The work shall comply with the requirements of BS 8218 "Code of practice for Mastic Asphalt roofing" as applicable to the work. Waterproofing shall not be carried out when Ambient temperature is below 5°C (40°F) or before any pipes, drains etc. have been installed. The surface to receive water-proofing shall be prepared by filling up all pit holes and crevices with 1:3 cement-sand mortar and high spots shall be chipped off and ground smooth. The surface shall be thoroughly cleaned and shall be perfectly dry.

Priming the Surface.

Over the prepared surface, specified primer shall be applied at the rate of 0.5 litre / sqm.

Sticking Coat of Bitumen / Felt Layers.

Over primed surface, indicated number of layers of roofing felt shall be installed.

Each layer of Felt shall be preceded by a sticking coat of bitumen @ 0.95Kg / Sqm. Bitumen shall be heated to flow freely but not above 162°C (325°F).

The Felt shall be laid with 101.6 mm end laps, free of wrinkles or air pockets underneath. While the sticking coat of bitumen is still hot, Felt will be pressed against the bitumen.

Laying of Felt layers shall be started from lower side of the roof. Felts shall be laid in shingle fashion, with overlapping along the length of felts shall be:-

| | | |
|--------------|---|--------|
| Side overlap | = | 50 mm |
| End overlap | = | 150 mm |

Covering.

Coverings, as specified by the manufacturer will be provided.

Storage.

Material should be stored vertically in a clean covered area. Rolls should not be stacked on top of each other.

Health & Safety.

As with all bituminous products, caution should always be exercised. Protective clothing such as gloves and goggles should be worn. Treat any splashes to the skin or eyes with fresh water immediately. Should any of the products be accidentally swollen, don't induce vomiting, but call medical assistance immediately.

Fixing Bitumen Based Membrane.

This torch bonding membrane will be fixed by applying heat with a Propane Gas torch. The manufacturer's Instructions will be followed to avoid defects and damage to the material.

Admixtures / Construction Chemicals.

Admixtures and other Chemicals which modify the properties of concrete shall be used on the advice of the designer and approval of the Engineer-in-Charge.

METHOD OF MEASUREMENTS

Measurement

The work shall be measured net as laid.

Turn ups or turn downs at eaves, verges, abutments, etc. shall not be added to measurements.

Lengths and widths shall be measured to nearest cm.

Deduction.

No deductions shall be made for:-

Cut out in portions in stepped flashing.

Opening not exceeding 0.4 Sqm.

Additions.

No additions shall be made for:-

Portions turned into grooves, joints of walls, etc.

Laps, joints, waste.

Linings to openings not exceeding 0.4 Sqm of openings.

CLARIFICATIONS OF RATES

The rates inter alia, include particularly:-

Work complete in all respects, as fixed in any position, or shape etc.

50mm side laps, 150mm end laps, open nailing, cuts, wastes, risk etc.

3" Thick Wooden Partitions:

1. General Description:

This document outlines the technical specifications for the construction of 3" thick wooden partitions. These specifications provide guidelines for the materials, dimensions, construction methods, and finishes required to achieve a durable and aesthetically pleasing wooden partition system.

2. Materials:

Wood: High-quality, seasoned wood with minimal knots and defects. The wood should be treated to resist pests, decay, and moisture.

Fasteners: Galvanized or stainless-steel screws, nails, or other appropriate fastening mechanisms.

Adhesive: Waterproof and wood-compatible adhesive for secure bonding.

3. Construction Method:

The wooden partition frame shall be constructed using vertical and horizontal members to form a sturdy framework.

The vertical posts shall be securely attached to the floor and ceiling, providing stability and support.

Horizontal rails shall be spaced evenly within the frame, maintaining structural integrity and facilitating attachment of panels.

Wooden panels shall be fitted within the frame and securely fastened to the vertical and horizontal members.

Adequate provision for electrical wiring, if required, shall be made through appropriate conduits or channels.

4. Dimensions:

The wooden partition shall have a thickness of 3 inches (7.62 cm).

The height and width of the partition shall be as per the project requirements and architectural plans.

5. Finishes:

The wooden surface shall be sanded smooth to remove any splinters or rough edges.

Stain or paint shall be applied to protect the wood and enhance its appearance. The finish shall be applied uniformly and according to the project's aesthetic specifications.

6. Installation:

The installation shall be carried out by experienced carpenters or construction professionals.

The wooden partition shall be securely fixed to the floor, ceiling, and adjacent walls as per the manufacturer's recommendations.

7. Fire Safety and Code Compliance:

The wooden partition shall comply with local fire safety codes and regulations. Fire-resistant finishes or treatments may be required depending on the project's fire safety requirements.

8. Maintenance:

Regular inspection and maintenance of the wooden partition shall be conducted to address any wear, damage, or deterioration.

Any signs of moisture, pest infestation, or structural issues shall be promptly addressed to ensure the longevity of the partition system.

9. Quality Control:

The wooden partition construction shall undergo quality control checks at various stages to ensure compliance with the specified materials, dimensions, and construction methods

Note: all other general items of civil, electrical, and plumbing works will be followed on prevailing technical specifications usually practice in renovation and repair works,

Schedules

Bill of Quantities

BILL OF QUANTITIES

Preamble

1. The bill of quantity shall be read in conjunction with condition of contract, specification and drawings.
2. The quantity given in the bill of quantities is estimated and provisional and is given to provide a common basis. The basis of payment will be the actual quantities of work executed and measured by the contractor and checked by the Engineer and verified by PMIU-SELECT and valued at the rates and prices entered in priced Bill of Quantities Where applicable and other wise at such rates and prices as the site may fix as per the contract.
3. The rates and prices entered in the priced Bill of Quantities shall, except insofar as it is otherwise provided under the Contract include all costs of Contractor's plant, labour, supervision, materials, execution, insurance, profit, taxes and duties, together with all general risks, liabilities and obligations set out or implied in the Contract. Furthermore, all duties, taxes and other levies payable by the Contractor under the Contract, or for any other cause, as on the date 15 days prior to deadline for submission of Bids, shall be included in the rates and prices and the total Bid Price submitted by the Bidder.
4. A rate or price shall be entered against each item in the priced Bill of Quantities, whether quantities are stated or not. The cost of items against which the Contractor will have failed to enter a rate or price shall be deemed to be covered by other rates and prices entered in the Bill of Quantities.
5. The whole cost of complying with the provisions of the Contract shall be included in the items provided in the priced Bill of Quantities, and where no items are provided, the cost shall be deemed to be distributed among the rates and prices entered for the related items of the Works.
6. General directions and description of work and materials are not necessarily repeated nor summarized in the Bill of Quantities. References to the relevant sections of the Bidding Documents shall be made before entering prices against each item in the priced Bill of Quantities.
7. Provisional sums included and so designated in the Bill of Quantities shall be expended in whole or in part at the direction and discretion of the Engineer in accordance with CLAUSE IN, General Conditions of Contract.



Government of Sindh

School Education & Literacy Department

SMALL WORKS, REMODEL & ESTABLISH OFFICE SPACE, PMIU-SELECT

BILL OF QUANTITIES SUMMARY OF COST

| Item # | Description | Total |
|--------|-------------------------------------|--------|
| | | Amount |
| 1 | CIVIL WORKS | |
| 2 | ELECTRICAL WORKS | |
| 3 | PLUMBING WORKS | |
| 4 | ENVIRONMENTAL AND SOCIAL COMPLIANCE | |
| | TOTAL PROJECT COST (Rs.) | |

Special instruction to the Bidder

- 1 The bidder is directed to visit the site & inspect the items of works before the bidding process. No extra claim will be admissible after the bidding process.
 - 2 No premium on Non-Schedule items will be paid to bidder(s).
 - 3 Disposing of dismantled material is the responsibility of contractor, No separate payment of carriage of material will be paid.
 - 4 No escalation of material will be admissible
 - 5 Drawing with the tender will be for tender purpose only.
 - 6 The cost of all test, when and whenever required will be borne by the bidder(s)
 - 7 Quantities may be varied subject to the direction of the engineer
 - 8 Environmental & Social standards are applicable on the small works. Contractor is responsible for its compliance
- Submittal of Material will be provided by the contractor for approval before the start of any activity, start of activity will not be allowed without approval of Material Submittal/sample

Contractors:

Company Name _____

Signing

Authority

Name

Designation

n

Signature: _____ Date: _____



| Sr No. | Description & Specification | Unit | Qty | Rate | Amount |
|--------|---|------|----------|------|--------|
| 1.0 | DISMANTLING WORK Dismantling (Brick/ Block Masonry/PCC/counter top): Dismantling of Existing Work and debris and shifting/disposal at locations complete in all respect directed by engineer | | | | |
| 1.1 | Dismantling of Existing Block Work including counter top etc, as directed by engineer. | Sft | 510.00 | | |
| 1.2 | Dismantling, Removing, of Existing False Ceiling/Glass Partition/Wood Cabinets etc as directed by engineer. | Sft | 1,204.77 | | |
| 1.3 | Dismantling, Removing, of Existing corrugated steel Roof Sheets and Required Frame as directed by engineer. | | | | |
| 1.4 | Sheets | Sft | 3,421.73 | | |
| 1.5 | Girders | Rft | 150.00 | | |
| 2.0 | <u>BLOCK MASONRY</u> Provide and laying block masonry with 1:4 mortar having minimum crush strength of 1200 psi including curing, scaffolding, hacking of existing surface for bonding where necessary, etc, complete in all respect. (Column and Block Masonry Joined steel 1' long 3/8" dia every 4 rows of block Masonry) | | | | |
| 2.1 | 6" thick (Above Plinth) | Sft | 411.06 | | |
| 2.2 | 4" thick (Above Plinth) | Sft | 400.00 | | |
| 3.0 | <u>PLASTER</u> <u>Internal Plaster</u> Provide and apply 1:4 cement sand plaster of minimum thickness as specified including providing and fixing of 8" wide galvanized metal lathe of 18 SWG at the junctions of concrete and block masonry conduct chases etc. rounded edges, drip molds, grooves where required smooth finished in line, level, plumb, curing etc., complete in all respect. | | | | |
| 3.1 | 3/4" thick | Sft | 2,500.00 | | |
| 4.0 | <u>Tile/Marble/Granite</u> <u>Ceramic Tile Dado</u> Provide and lay ceramic tile dado of approved sample with 1:4 cement sand mortar base of required thickness setting the tile with neat cement | | | | |
| 4.1 | mortar, grouting the joints with white cement mixed with approved pigment of matching color | | | | |

SMALL WORKS, REMODEL & ESTABLISH OFFICE SPACE, PMIU-SELECT

Bill of Quantities

CIVIL WORKS

| | | | | |
|-----|---|-----|--------|--|
| | including curing, cleaning etc., complete in all respect. | | | |
| 4.1 | Wall | Sft | 586.60 | |
| 4.2 | Floor | Sft | 220.00 | |

| Sr No. | Description | Unit | Qty | Rate | Amount |
|--------|--|------|----------|------|--------|
| 4.3 | Provide & install in position ¾" thick pre-finished granite top with 6 sides chemical treatment (finish as approved) of approved sample with beveled / rounded edges, s, wastage, adhesives, edge making & polishing lifting, etc., complete as per drawing & instruction of the Engineer. For payment granite area will be measured. Kitchen, Ablution Area | | | | |
| 4.3 | Kitchen Top | Sft | 56.00 | | |
| 5.0 | Wooden Flooring | | | | |
| 5.1 | Provide and install in line & level Pre-finished Wooden Laminated Flooring 8mm thick 08" x 48" Imported Wooden Paneling of Floor using 2mm thick under floor Foam approved quality Under layer, wood edge & groove, wastage, lifting etc., complete in all respect as per manufacturer's specifications and instructions. For payment net installed laminate floor area shall be measured, complete in all respect as per direction of engineer. | | | | |
| | Floor | Sft | 1,914.80 | | |
| 5.2 | Wood Skirting Provide and install in position wooden skirting, consisting of 65mm x 12mm thick Solid Red Meranti wood for skirting with approved Polish Finish fixed on wall / Partition with screw, including all hardware, edge making, cutting, wastage, etc., complete in all respect as per drawing and instruction of the Architect. For payment net running length of skirting will be measured. | | | | |
| 6.0 | Skirting | Rft | 330.67 | | |
| 6.0 | False Ceiling Providing and fixing of Gypsum board false ceiling 8' x 4' in size, including the cost of wastage, and including the cost of accessories any civil works if required etc, including its frame, hanging arrangement complete in all respect and as directed by the Engineer. | | | | |
| 7.0 | Providing and fixing of Gypsum board false ceiling 8' x 4' in size, including the cost of wastage, and including the cost of accessories any civil works if required etc, including its frame, hanging arrangement complete in all respect and as directed by the Engineer. | Sft | 2,189.55 | | |
| 7.0 | Partition Wall Providing and fixing wooden partition 3 inch with | | | | |

SMALL WORKS, REMODEL & ESTABLISH OFFICE SPACE, PMIU-SELECT

Bill of Quantities

CIVIL WORKS

| | | | | |
|--|-----|----------|--|--|
| partial wood framing and both side lasani fix with nail and best quality glu and 5mm thick fix glass with frosted sheet using gola pati for holding fix glass, on second (rasing the existing partition and thrid floor (raising the partition from floor), including the cost lifting material, complete in all respect as directed by Engineer | Sft | 1,046.24 | | |
|--|-----|----------|--|--|

| Sr No. | Description | Unit | Qty | Rate | Amount |
|--------|---|------|----------|------|--------|
| 8.0 | Metal Work | | | | |
| 8.1 | Corrugated Sheet Providing and Installation 22 to 24 gauge Sheet as per Existing Corrugated Sheets in proper slope with nut bolt, washer with all respect, Included the cost of 2 coats of ant rust paint etc. proper drainage/gutter drain will be provided as per the direction of engineer | Sft | 3,421.73 | | |
| 8.2 | I Beams Providing and Installation of I Beam if where Required or as per Engineer Instruction | Rft | 300.00 | | |
| 8.3 | GI Door Frames Providing and Fixing 16 Gouge GI Door Frame with Hingis and hole Past, fill with cement sand mortar of 1:4,fix in position, complete in all respect as per direction of Engineer | Rft | 36.00 | | |
| 9.0 | Door Provide and install in position Wooden Doors, consisting of 1½" thick solid core flush shutter (for flush door shutters partal wood infill framing), 1/8" thick Red Meranti Veneer fixed on both side of shutter, 7" x 2" Red Meranti Wood frame, 21/4" wide Red Meranti beading & ½" thick Red Meranti Wood lipping with approved Polish Finish, including all hardware, S.S. Hinges, S.S. Handles, S.S. Lockset, wooden shims, glue, silicone sealant, rubber gasket, wastage, lifting, cutting, fixing, making of groove etc., complete as per drawing, hardware schedule & instruction of the Engineer. For payment frame to frame size will be measured. | Sft | 129.50 | | |
| 9.1 | UPVC Doors with Frame Provide and install in position UPVC windows & ventilators of approved sample & quality (Framez, Alfapen or approved equivalent) as shown in drawings & details, including all hardware, silicon sealant, rubber & neoprene gasket, wastage, fixing system as per manufactures instruction, lifting, cutting, scaffolding, etc., complete in all respect. For payment frame to frame will be measured. | Sft | 157.00 | | |

SMALL WORKS, REMODEL & ESTABLISH OFFICE SPACE, PMIU-SELECT

Bill of Quantities

CIVIL WORKS

| | | | | | |
|-----|-------------|--|--|--|--|
| 9.2 | Glass Doors | | | | |
|-----|-------------|--|--|--|--|

| Sr No. | Description | Unit | Qty | Rate | Amount |
|--------|---|------|----------|------|--------|
| | Provide and install in position 7'x3' frame-less Glass Door, consisting of 12mm thick clear float glass (tempered) shutter of approved shade, sample & best quality, neoprene gasket, edge polishing, pivot heavy duty floor hinges with S.S. Patch fittings for door machine brush finish of approved sample on top & bottom, bottom lockset, S.S. Handles as per design on both sides of shutter, including all hardware, wastage, silicon sealant, lifting, cutting, fixing, etc., complete as per drawing, hardware schedule and instruction of the Engineer. | Nos | 15.00 | | |
| 10.0 | PAINT WORK | | | | |
| 10.1 | Mat Finish Provide and apply Mat Finish (approved brand) paint minimum 3 coats of approved shade and source to internal surfaces prepared smooth with filling the depression with ICI/Gobis/Nelson/Burger double filling putty under one coat of primer, with carbonados, scaffolding etc., complete in all respect. | Sft | 7,000.00 | | |
| 10.2 | Enamel Paint Provide and apply synthetic enamel (approved brand) minimum three coats of approved shades to internal surfaces prepared smooth with filling the depression with ICI double filling putty over a one coat of primer etc., complete in all respect. | Sft | 1,000.00 | | |
| 11.0 | WATER PROOFING AND ROOF TREATMENT | | | | |
| | Provide and lay roof treatment Applying the three Coat of epoxy and Filing the Joints, Laying Cloth on joints necessary etc. inc the cost of Heat Proofing complete in all respect. Testing through water Jet after the installation, complete satisfaction of Engineer, the bidder must furnished the 10 years guaranty of water proofing. | Sft | 3,000.00 | | |
| | Total | | | | |

SMALL WORKS, REMODEL & ESTABLISH OFFICE SPACE, PMIU-SELECT

**Bill of Quantities
ELECTRICAL WORKS**

| Sr No. | Description | Unit | Qty | Rate | Amount |
|---------------|--|-------------|------------|-------------|---------------|
| 1.0 | Providing and Installation of 7/36 1+1 wire Circuit and AC in Pvc Pipe/Duct inc the cutting of wall or floor with repairing. Complete in all respect, as per direction of Engineer. | Rft | 450.00 | | |
| 2.0 | Providing and Installation of 7/29 1+1 wire in Pvc Pipe/Duct inc the cutting of wall or floor with repairing. Complete in all respect, as per direction of Engineer. | Rft | 400.00 | | |
| 3.0 | Providing and Fixing Light Point with 3/29 1+1 wire switch board to Light/Fan, Complete in all respect, as per direction of Engineer. | Nos | 60.00 | | |
| 4.0 | Providing and Installation Switch Sheet with Back Box inc. cost of cutting and repairing of back board. Complete in all respect, as per direction of Engineer. | | | | |
| 4.1 | 1 Gang | Nos | 5.00 | | |
| 4.2 | 2 Gang | Nos | 5.00 | | |
| 4.3 | 4 Gang | Nos | 5.00 | | |
| 4.4 | 6 Gang | Nos | 4.00 | | |
| 4.5 | 8 Gang | Nos | 4.00 | | |
| 5.0 | Providing and Installation of LED 8" Round/Squire 17 Walt Philips Make False Ceiling lights. Complete in all respect, as per direction of Engineer. | Nos | 40.00 | | |
| 6.0 | Providing and Installation of False Ceiling Fan of approved make Complete in all respect, as per direction of Engineer. | Nos | 12.00 | | |
| 7.1 | Providing and Installation Power Plug/Multi Switch Sockets with Back Box inc. cost of cutting and repairing of back board. Complete in all respect, as per direction of Engineer. | Nos | 20.00 | | |
| 7.2 | Providing and installation Of DB with required Breaker or as per Site Requirement inc the cost of Wall Cutting and Fixing repairing and as per load.Complete in all respect, as per direction of Engineer. | Nos | 1.00 | | |

| | | | | | |
|--------------|---|-----|------|--|--|
| 7.3 | Providing and Installing automatic Hand Dryer of siemens or approved equivalent with full automatic Sensor system, Automatic switch on and off, permanent wiring installation, thermal cut out for overload protection Easy to mount kit, as per installation instructions included | Nos | 2.00 | | |
| Total | | | | | |

SMALL WORKS, REMODEL & ESTABLISH OFFICE SPACE, PMIU-SELECT

**Bill of Quantities
PLUMBING WORKS**

| Sr No. | Description | Unit | Qty | Rate | Amount |
|--------|---|------|--------|------|--------|
| 1.0 | Water Supply | | | | |
| 1.1 | Providing and Installation of Steelex/Jeddah/Pak Arab Brand 1/2" CPVC /UPVC Pipe with Necessary Fitting like Brass Elbo, Plain Elbow, Bend. Socket, Tee and jointing with EZ or AGM Solvent solvent. Complete in all respect, as per direction of Engineer. | | | | |
| | UPVC 1/2" Dia | Rft | 150.00 | | |
| | CPVC 1/2" Dia | Rft | 150.00 | | |
| 1.2 | Providing and Installation of Steelex/Jeddah/Pak Arab Brand 1" CPVC Pipe with Necessary Fitting like Elbo, Bend. Socket, Tee and jointing with EZ or AGM Solvent solvent. Complete in all respect, as per direction of Engineer. | | | | |
| | UPVC 1" Dia | Rft | 100.00 | | |
| | CPVC 1" Dia | Rft | 100.00 | | |
| 2.0 | Sewerage Line | | | | |
| 2.1 | Providing and Installation of Steelex/Jeddah/Pak Arab Brand 3" UPVC Pipe with Necessary Fitting like P-TrapElbo, Bend. Socket, Tee and jointing with EZ or AGM Solvent solvent. Complete in all respect, as per direction of Engineer. | | | | |
| | Toilets and Kitchen | Rft | 60.00 | | |
| 2.2 | Providing and Installation of Steelex/Jeddah/Pak Arab Brand 4" UPVC Pipe with Necessary Fitting like Elbo, Bend. Socket, Tee and jointing with EZ or AGM Solvent solvent. Complete in all respect, as per direction of Engineer. | | | | |
| | Toilets and Kitchen to Main Sewerage Line | Rft | 60.00 | | |
| 3.0 | Providing and installation of Master/ACL/General Asia Make Indian WC with 6 liter Flush tank and required Accessories, Complete in all respect, as per direction of Engineer. | Nos | 2.00 | | |
| 4.0 | Providing and installation of Master/ACL/General Asia Make English Commode Water Cisterns System, Seat cover thumbal and Required Accessories Complete in all respect, as per direction of Engineer. | | | | |

| Sr No. | Description | Unit | Qty | Rate | Amount |
|--------|--|------|-------|------|--------|
| | For Adults | Nos | 3.00 | | |
| | For Todlers (baby Commode) | Nos | 1.00 | | |
| 5.0 | Providing Fixing Master/ACL/General Asia Make Basin Pedestal with required Accessories like Waist Jali and Pipe. Complete in all respect, as per direction of Engineer. | | | | |
| | For Adults | Nos | 3.00 | | |
| | For Todlers (baby Wash basin) | Nos | 1.00 | | |
| 6.0 | Providing and Installation of Master/Faisal/Idress Make Tabs inc the cost of CP Nipple, Teflon Tape and Thread. Complete in all respect, as per direction of Engineer. | | | | |
| 6.1 | Tee Cock | Nos | 18.00 | | |
| 6.2 | Long Bib cock | Nos | 5.00 | | |
| 6.3 | Dabble Bib cock | Nos | 5.00 | | |
| 6.4 | Muslim Shower | Nos | 5.00 | | |
| 6.5 | Side Piler cock | Nos | 3.00 | | |
| 6.6 | Sink Cock | Nos | 3.00 | | |
| 7.0 | Providing and Fixing Floor trap with jali 4"x4" with white cement. Complete in all respect, as per direction of Engineer. | Nos | 8.00 | | |
| 8.0 | Providing and Fixing Kitchen Sink with Waist pipe and Jali Complete in all respect, as per drawings and direction of Engineer. | Nos | 3.00 | | |
| 9.0 | Provide and install in position Mirror, consisting of solignum & Fire Retardant Paint treated partal wood framing of approved sections, 5mm thick Belgium Mirror with beveled edge of approved quality, 12mm thick commercial ply backing (Fire Retardant Paint inner side) fixed on frame, 20mm x 20mm Aluminum Angle on all around of mirror, including all hardware, wastage, lifting, cutting, fixing etc., complete in all respect. | Sft | 70.00 | | |
| 10.0 | supply and fixing inverter Electric Geyser, 40 lit capacity, complete with thermostat, safety valve, complete in all respect, as per instruction of engineer. | Nos | 1.00 | | |
| 11.0 | Supply and fix, Toilet paper holder, any shape, pattern, size with plugs, screws etc., complete all as per direction of Engineer | Nos | 5.00 | | |

SMALL WORKS, REMODEL & ESTABLISH OFFICE SPACE, PMIU-SELECT

Bill of Qauntities

PLUMBING WORKS

| Sr No. | Description | Unit | Qty | Rate | Amount |
|---------------|---|-------------|------------|-------------|---------------|
| 12.0 | Supply and fix, Soap dispenser any shape, pattern and size with plugs, screws etc. complete all as per direction of Engineer | Nos | 3.00 | | |
| 13.0 | Supply and fix, Towel rail, CP, single rod, any pattern, shape and size with plugs, screws etc. complete all as per direction of Engineer | Nos | 2.00 | | |
| Total | | | | | |

| Sr No. | Description | Unit | Qty | Rate | Amount |
|--------|--|------|-----|------|--------|
| 1.0 | <p>ESC Implementation Providing and implementation of following PPEs, during the execution of works, using of PPEs, is mandatory part of work, as per direction of engineer.</p> | | | | |
| 1.1 | <p>Common PPEs Safety Helmet Reflecting Waste Goggles' Hand Gloves Safety Shoes Face Mask N-95</p> <p>Specific PPEs Rubber Gloves Face Shield Long Shoes, standard quality and with complete satisfaction of engineer.</p> | Set | 50 | | |

| Sr No. | Description | Unit | Qty | Rate | Amount |
|--------------|---|---------|-----|------|--------|
| 1.2 | Providing First Aid Box, well-equipped firstaid box on a construction site, it necessary for handling minor injuries and providing initial medical assistance before professional help arrives. following is a list of items consider including in a first aid box, complete in all respect as per direction of engineers Adhesive bandages (assorted sizes) Sterile gauze pads Adhesive tape Antiseptic wipes Disposable gloves Scissors Tweezers Safety pins Triangular bandages Elastic bandages Sterile eye wash solution Eye pad or eye shield Cold packs (instant, disposable) Antiseptic solution Sterile saline solution (for wound cleaning) Pain relievers Burn gel or ointment Medical adhesive tape rubber gloves | Nos | 2 | | |
| 1.3 | Fire Extinguisher A to D category | Nos | 2 | | |
| 2.0 | Trainings | | | | |
| 1.1 | Arrangements of training for skilled and non skilled contractors staff. | Session | 4 | | |
| Total | | | | | |

Drawing

| DWG NO. | SHEET NO. | INDEX | DRAWING TITLE | REV NO. |
|-------------------------------|-----------|-------|---------------------------------|---------|
| ARCHITECTURAL DRAWINGS | | | | |
| GE-01 | 01 OF 01 | - | LIST OF DRAWINGS | 01 |
| AR-00 | 01 OF 01 | - | ARCHITECTURAL PLAN | 01 |
| AR-01 | 01 OF 01 | - | WOODEN FLOOR PLAN | 01 |
| AR-02 | 01 OF 01 | - | CEILING LAYOUT PLAN | 01 |
| AR-03 | 01 OF 01 | - | ROOF PLAN | 01 |
| AR-04 | 01 OF 01 | - | BUILDING SECTIONS | 01 |
| AR-05 | 01 OF 01 | - | DOOR AND WINDOWS DETAILS | 01 |
| AR-06 | 01 OF 01 | - | INTERIOR AND EXTERIOR FINISHES | 01 |
| ELECTRICAL DRAWINGS | | | | |
| EL-02A | 01 OF 01 | - | GENERAL NOTES AND OTHER DETAILS | 01 |
| EL-02A | 01 OF 01 | - | STANDARD DETAILS | 01 |
| EL-02A | 01 OF 01 | - | ELECTRICAL LEGENDS | 01 |
| EL-02A | 01 OF 01 | - | COMMUNICATION LAYOUT PLAN | 01 |
| EL-02A | 01 OF 01 | - | POWER LAYOUT PLAN | 01 |
| EL-02A | 01 OF 01 | - | LIGHTING LAYOUT PLAN | 01 |
| PLUMBING DRAWINGS | | | | |
| EL-02A | 01 OF 01 | - | GENERAL NOTES AND OTHER DETAILS | 01 |
| EL-02A | 01 OF 01 | - | STANDARD DETAILS | 01 |
| EL-02A | 01 OF 01 | - | ELECTRICAL LEGENDS | 01 |
| EL-02A | 01 OF 01 | - | COMMUNICATION LAYOUT PLAN | 01 |
| EL-02A | 01 OF 01 | - | POWER LAYOUT PLAN | 01 |
| EL-02A | 01 OF 01 | - | LIGHTING LAYOUT PLAN | 01 |



GOVERNMENT OF SINDH
SCHOOL EDUCATION &
LITERACY DEPARTMENT

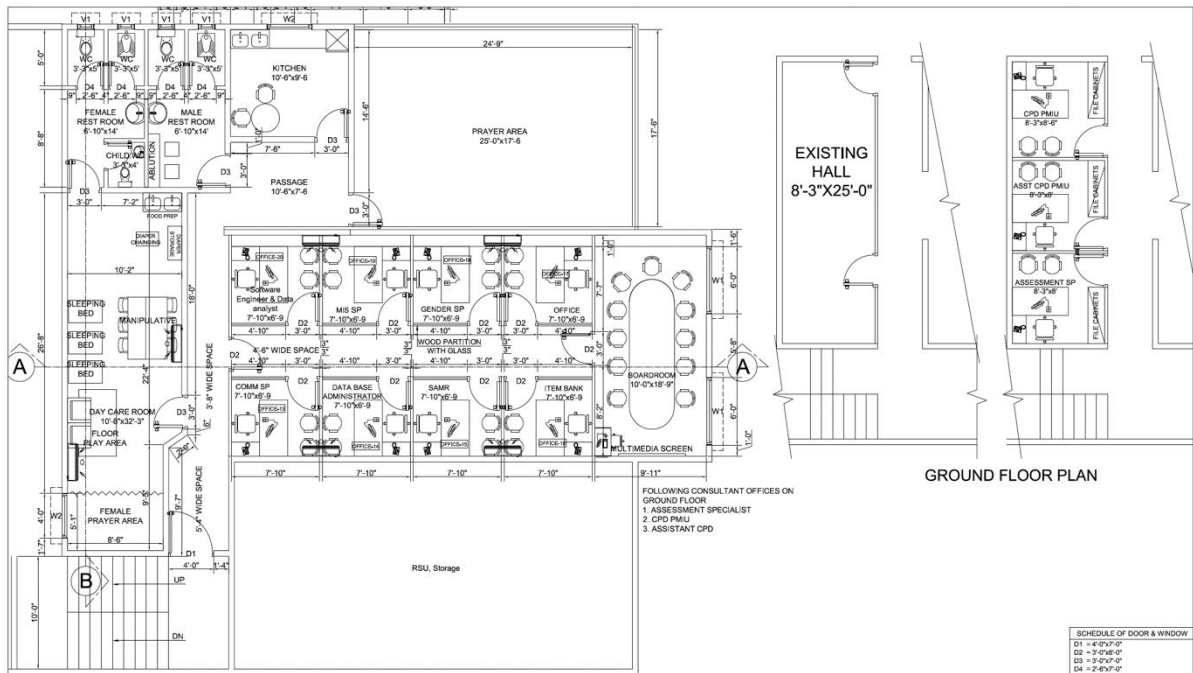
PROJECT-

**SMALL WORKS, REMODEL &
ESTABLISH OFFICE SPACE,
PMIU-SELECT**

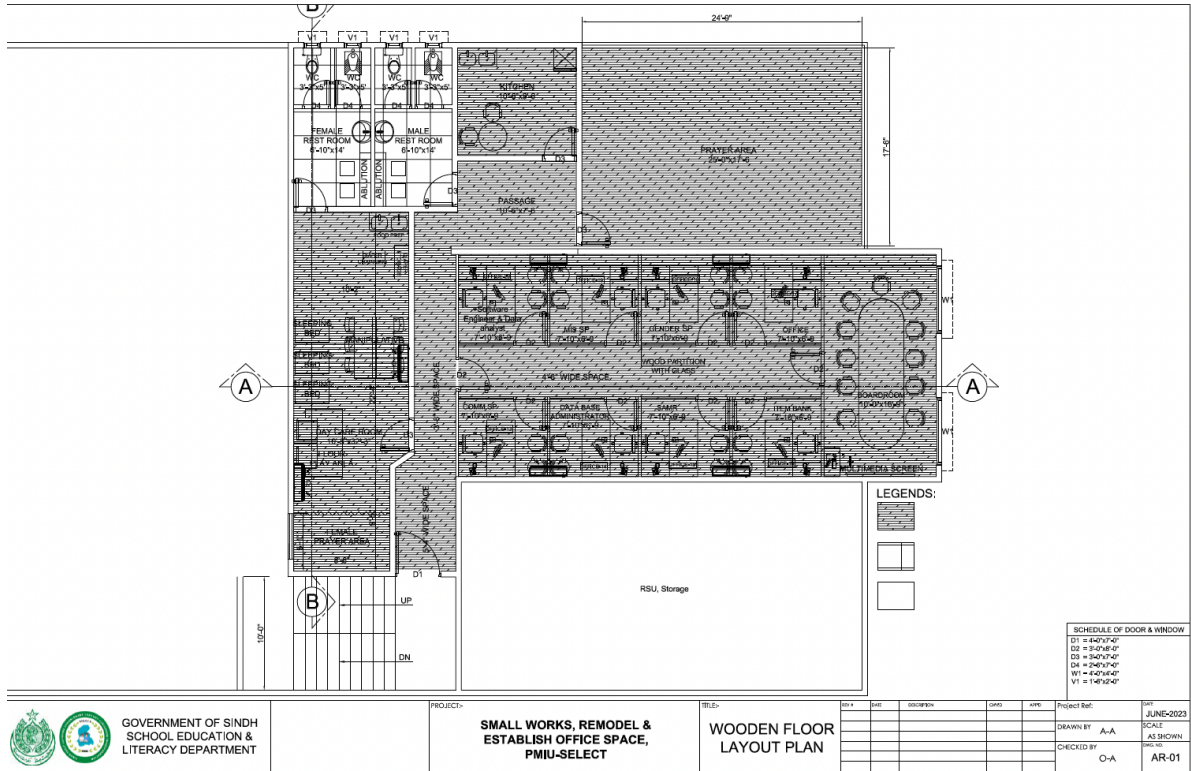
TITLE-

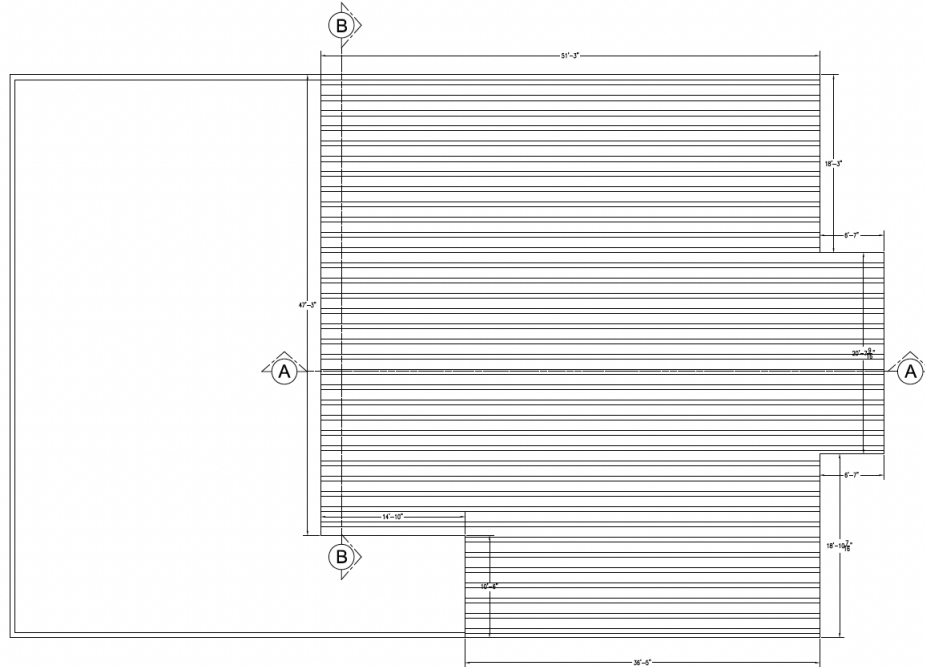
**LIST OF
DRAWINGS**

| REV. | DATE | DESCRIPTION | DRG. | APPD. | PROJECT EST. | DATE |
|------|------|-------------|------|-------|--------------|----------|
| | | | | | DRAWN BY | DEC-2022 |
| | | | | | A-A | SCALE |
| | | | | | CHECKED BY | AS SHOWN |
| | | | | | O-A | DATE |
| | | | | | | GE-01 |

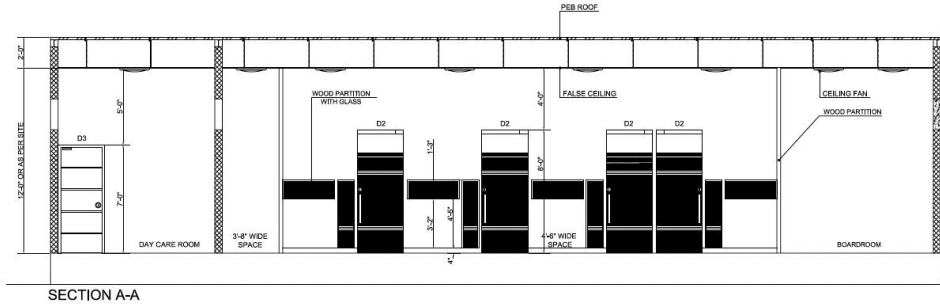
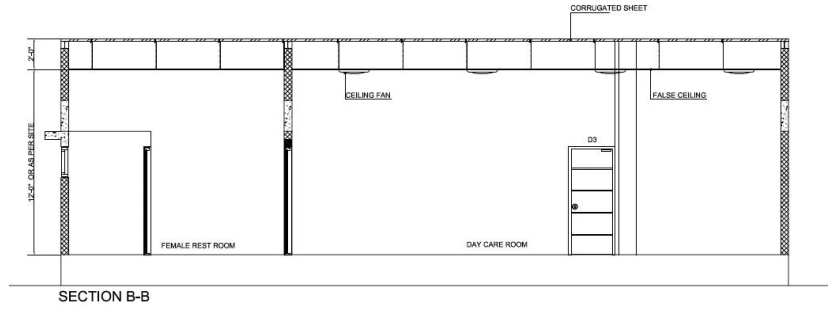


| | | | | | | | | |
|--|--|----------|--|--------|----------------------|---|---|--|
| | GOVERNMENT OF SINDH SCHOOL EDUCATION & LITERACY DEPARTMENT | PROJECT: | SMALL WORKS, REMODEL & ESTABLISH OFFICE SPACE, PMIU-SELECT | TITLE: | ARCHITECTURE PLAN | NO. + DATE DESCRIPTION QTY UNIT AMT. | PROJECT No: DRAWN BY: CHECKED BY: | DATE: SCALE: SHEET NO.: TOTAL SHEETS: |
| | | PROJECT: | SMALL WORKS, REMODEL & ESTABLISH OFFICE SPACE, PMIU-SELECT | TITLE: | ARCHITECTURE PLAN | NO. + DATE DESCRIPTION QTY UNIT AMT. | PROJECT No: DRAWN BY: CHECKED BY: | DATE: SCALE: SHEET NO.: TOTAL SHEETS: |





| | | | | | | | | | |
|--|--|-----------------------------|-----|------|-------------|------|------|-------------------|-----------------|
|   GOVERNMENT OF SINDH SCHOOL EDUCATION & LITERACY DEPARTMENT | PROJECT:- SMALL WORKS, REMODEL & ESTABLISH OFFICE SPACE, PMIU-SELECT | TITLE:- ROOF PLAN | NO. | DATE | DESCRIPTION | DATE | APP. | Project Ref. | DATE |
| | | | | | | | | | DRAWN BY A-A |
| | | | | | | | | CHECKED BY O-A | NO. / AR-03 |

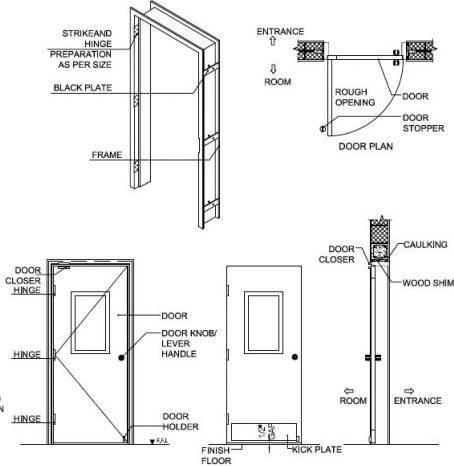
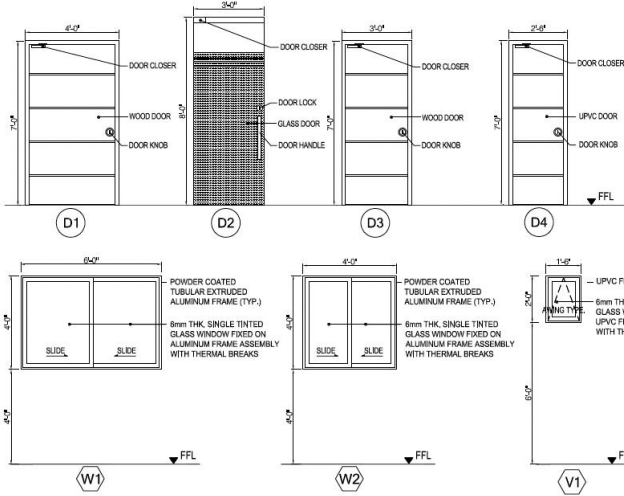


SCHEDULE OF DOOR & WINDOW

| | |
|----|-----------------|
| D1 | = 4'-0" x 7'-0" |
| D2 | = 3'-0" x 6'-0" |
| D3 | = 3'-0" x 7'-0" |
| D4 | = 2'-6" x 7'-0" |
| W1 | = 4'-0" x 6'-0" |
| W1 | = 1'-6" x 2'-0" |

| | | | | | | | | | | | | |
|--|--|----------|--|--------|----------------------|-----|------|----------|---------|----------|-------------------|----------------------|
| | GOVERNMENT OF SINDH SCHOOL EDUCATION & LITERACY DEPARTMENT | PROJECT- | SMALL WORKS, REMODEL & ESTABLISH OFFICE SPACE, PMIU-SELECT | TITLE- | BUILDING SECTIONS | NO. | DATE | DESIGNED | CHECKED | APPROVED | PROJECT REP. | DATE |
| | | | | | | | | | | | | DRAWN BY A-A |
| | | | | | | | | | | | CHECKED BY C-A | PROJECT NO. AR-04 |

| SCHEDULE OF DOORS & WINDOWS | | | | | | | | | | | | | | |
|-----------------------------|-------------|-------------|------------|-----------------|-------|----------|----|----------|----------------------|-------|-------|------------|-------|-------|
| DOOR NAME | DOOR TYPE | DOORS | | | FRAME | | | | WINDOWS / VENTILATOR | | | | | |
| | | HEIGHT (FT) | WIDTH (FT) | BY MANUFACTURER | UPVC | ALUMINUM | GL | ALUMINUM | GLASS | GLASS | GLASS | GLASS | GLASS | GLASS |
| D1 | SINGLE LEAF | 4'-0" | 7'-0" | | | | | | | | | W1 SLIDING | 6'-0" | 4'-0" |
| D2 | SINGLE LEAF | 3'-0" | 8'-0" | BY MANUFACTURER | | | | | | | | W2 SLIDING | 6'-0" | 4'-0" |
| D3 | SINGLE LEAF | 3'-0" | 7'-0" | | | | | | | | | V1 SLIDING | 1'-6" | 2'-0" |
| D4 | SINGLE LEAF | 2'-6" | 7'-0" | | | | | | | | | | | |



GOVERNMENT OF SINDH
SCHOOL EDUCATION &
LITERACY DEPARTMENT

PROJECT:-
**SMALL WORKS, REMODEL &
ESTABLISH OFFICE SPACE,
PMU-SELECT**

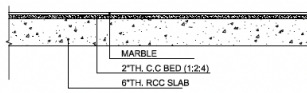
DELS:-
**WINDOWS AND
DOORS DETAILS**

| REV # | DATE | DESCRIPTION | DATE | APP | Project Ref | DATE |
|-------|------|-------------|------|-----|-----------------|-----------------|
| | | | | | | JUNE-2022 |
| | | | | | DRAWN BY: A-A | SCALE: AS SHOWN |
| | | | | | CHECKED BY: O-A | PROJECT: AR-05A |

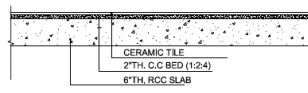
| INTERIOR FINISHES (FLOORING) | | | | | | | |
|-----------------------------------|-------------------------|-----------|---------------|--------------|--------------|-------------|--------------|
| DESCRIPTION | SUB FLOOR | | MAIN FLOORING | | | | |
| | COMPACTED EARTH FILLING | 6" SOLING | 4" PCC 1:4:8 | 2" PCC 1:2:4 | WOODEN FLOOR | MARBLE TILE | CERAMIC TILE |
| 1 FEMALE PRAYER AREA | | | | | ● | | |
| 2 DAY CARE ROOM | | | | | ● | | |
| 3 5'-4" WIDE SPACE | | | | | ● | | |
| 4 3'-8" WIDE SPACE | | | | | ● | | |
| 5 PASSAGE | | | | | ● | | |
| 6 PRAYER AREA | | | | | ● | | |
| 7 KITCHEN | | | ● | ● | | ● | |
| 8 MALE REST ROOM | | | ● | ● | | | ● |
| 9 FEMALE REST ROOM | | | ● | ● | | | ● |
| 10 COMM SP | | | | | ● | | |
| 11 DATA BASE ADMINISTRATOR | | | | | ● | | |
| 12 SAMR | | | | | ● | | |
| 13 ITEM BANK | | | | | ● | | |
| 14 BOARD ROOM | | | | | ● | | |
| 15 OFFICE | | | | | ● | | |
| 16 GENDER SP | | | | | ● | | |
| 17 MIS SP | | | | | ● | | |
| 18 SOFTWARE ENGINEER DATA ANALYST | | | | | ● | | |
| 19 | | | | | | | |
| 20 | | | | | | | |
| 21 | | | | | | | |

| INTERIOR FINISHES (PLASTER/ PAINT/ VERNISHED) | | | | | |
|---|---------|---------|---------------|-------------|---------|
| DESCRIPTION | CEILING | WALL | CEILING PAINT | WALL PAINT | FALSE |
| | PLASTER | PLASTER | DISTEMPER | MATT FINISH | CEILING |
| 1 FEMALE PRAYER AREA | | ● | | ● | ● |
| 2 DAY CARE ROOM | | ● | | ● | ● |
| 3 5'-4" WIDE SPACE | | ● | | ● | ● |
| 4 3'-8" WIDE SPACE | | ● | | ● | ● |
| 5 PASSAGE | | ● | | ● | ● |
| 6 PRAYER AREA | | ● | | ● | ● |
| 7 KITCHEN | | ● | | ● | ● |
| 8 MALE REST ROOM | | ● | | ● | ● |
| 9 FEMALE REST ROOM | | ● | | ● | ● |
| 10 COMM SP | | | | ● | ● |
| 11 DATA BASE ADMINISTRATOR | | | | ● | ● |
| 12 SAMR | | | | ● | ● |
| 13 ITEM BANK | | | | ● | ● |
| 14 BOARD ROOM | | | | ● | ● |
| 15 OFFICE | | | | ● | ● |
| 16 GENDER SP | | | | ● | ● |
| 17 MIS SP | | | | ● | ● |
| 18 SOFTWARE ENGINEER DATA ANALYST | | | | ● | ● |
| 19 | | | | | |
| 20 | | | | | |
| 21 | | | | | |

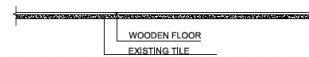
EXTERIOR FINISHES



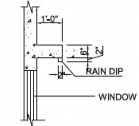
TYPICAL DETAIL OF ROOM'S FLOOR FINISHING



TYPICAL DETAIL OF TOILET FINISHING

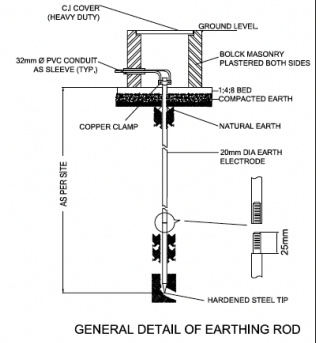
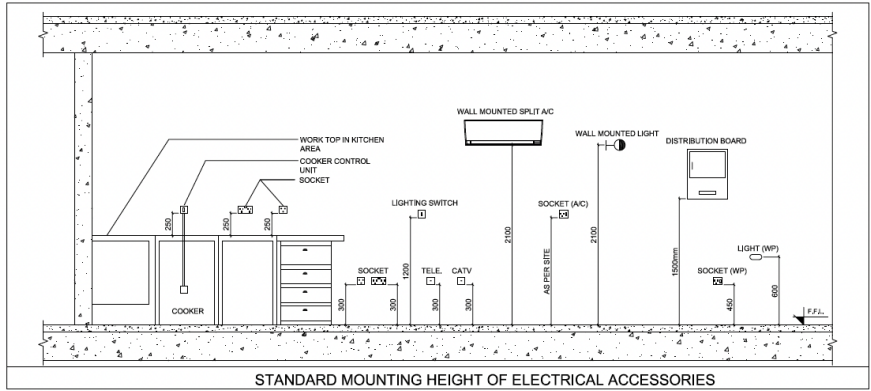


TYPICAL DETAIL OF OFFICE AREA



WINDOW PROJECTION

| | | | | | | | | | |
|--|--|--|------|------|-------------|------|------|-------------------|-------------------|
|  GOVERNMENT OF SINDH SCHOOL EDUCATION & LITERACY DEPARTMENT | PROJECT:- SMALL WORKS, REMODEL & ESTABLISH OFFICE SPACE, PMIU-SELECT | TITLE:- INTERIOR AND EXTERIOR FINISHES | REV. | DATE | DESCRIPTION | DATE | DATE | Project Ref. | DATE |
| | | | | | | | | | DRAWN BY A-A |
| | | | | | | | | CHECKED BY O-A | AS SHOWN AR-06 |

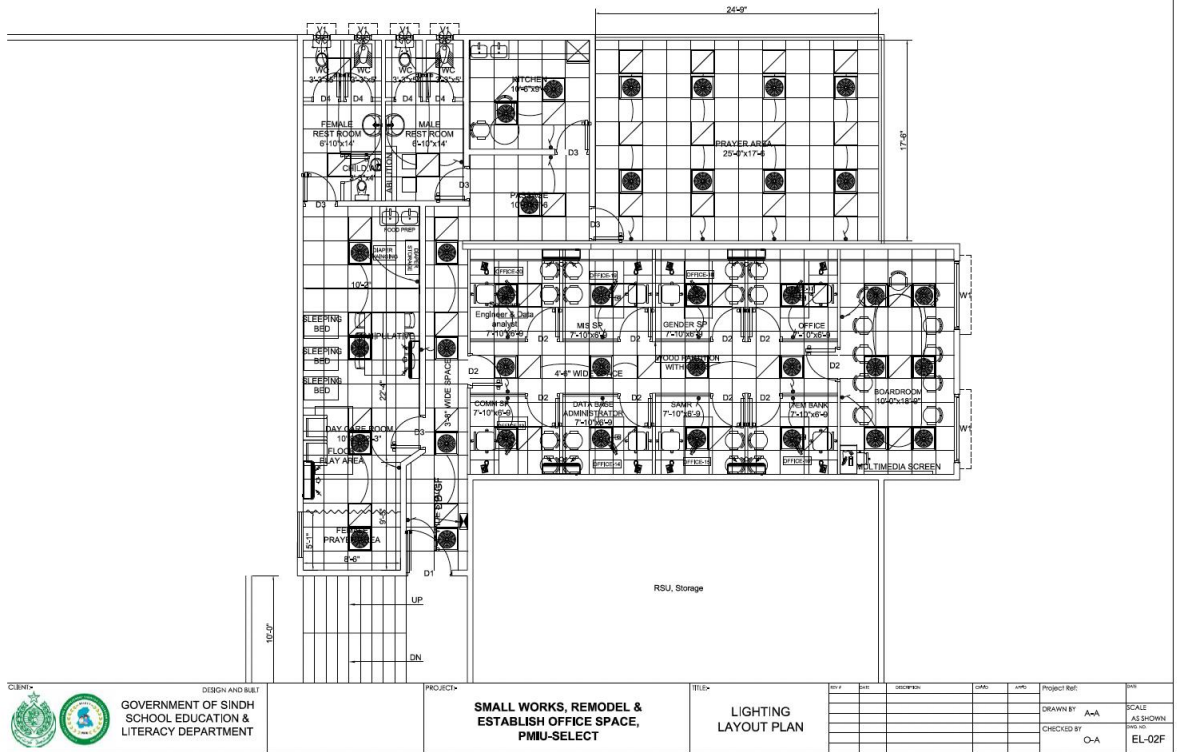


| | | | | | | | | | | |
|---|--|---|--|-------|------|-------------|------|------|--------------|------|
|  <p>GOVERNMENT OF SINDH SCHOOL EDUCATION & LITERACY DEPARTMENT</p> | | <p>RENOVATION OF CONSULTANT OFFICE AT REFORM SUPPORT UNIT GOS KARACHI</p> | <p>TITLE:- STANDARD DETAILS</p> | REV # | DATE | DESCRIPTION | DATE | APPD | Project Ref: | DATE |
| | | | | | | | | | | |

| ELECTRICAL LEGEND | | |
|-------------------|--------|---|
| S.NO | SYMBOL | DESCRIPTION |
| 1 | | DOWN LIGHT (1X25W) LED |
| 2 | | DOWN LIGHT (1X25W) LED |
| 3 | | DECORATIVE LIGHT LED(1X10W) |
| 4 | | PLANTER LIGHT (5.5W) LED |
| 5 | | BOUNDARY WALL LIGHT |
| 6 | | GATE LIGHT |
| 7 | | MIRROR LIGHT |
| 8 | | SPOT LIGHT |
| 9 | | CEILING FAN |
| 10 | | EXHAUST FAN |
| 11 | | 10A LIGHT CONTROL SWITCH & FAN DIMMER |
| 12 | | CHANDELIER POINT |
| 13 | | COUNTER TOP LIGHT |
| 14 | | RIBS LIGHT |
| 15 | | SURFACE CEILING DOWN LIGHT FIXTURE WITH 12W LED LAMP, OR EQUIVALENT |
| 16 | | BRACKET FAN |
| 17 | | 18" FAN FOR 2'x2' FALSE CEILING |
| 18 | | 2'x2' RECESSED TYPE 36W SMART LED PANEL WITH 4000K COLOR TEMPERATURE AND 3400 lm WITH EFFICECY 95 lm/WATT |

| ELECTRICAL LEGEND | | |
|-------------------|--------|-------------------------------|
| S.NO | SYMBOL | DESCRIPTION |
| 1 | | 13 AMP SWITCH SOCKET |
| 2 | | 13 AMP SWITCH SOCKET DUPLEX |
| 3 | | SHAVER SOCKET |
| 4 | | 16 AMP SWITCH SOCKET |
| 5 | | TV OUTLET |
| 6 | | DATA OUTLET |
| 7 | | OUTDOOR INTERCOM |
| 8 | | PUSH BUTTON & BELL |
| 9 | | CCTV CAMERA |
| 10 | | INDOOR SPLIT UNIT |
| 11 | | DISTRIBUTION BOARD |
| 12 | | MAIN DISTRIBUTION BOARD |
| 13 | | MAIN TELEPHONE JUNCTION BOX |
| 14 | | TV SPLITTER |
| 15 | | ELECTRIC METER |
| 16 | | STEP RISER LIGHT (1X1.5W) LED |
| 17 | | WINDOW PROJECTION LIGHT |

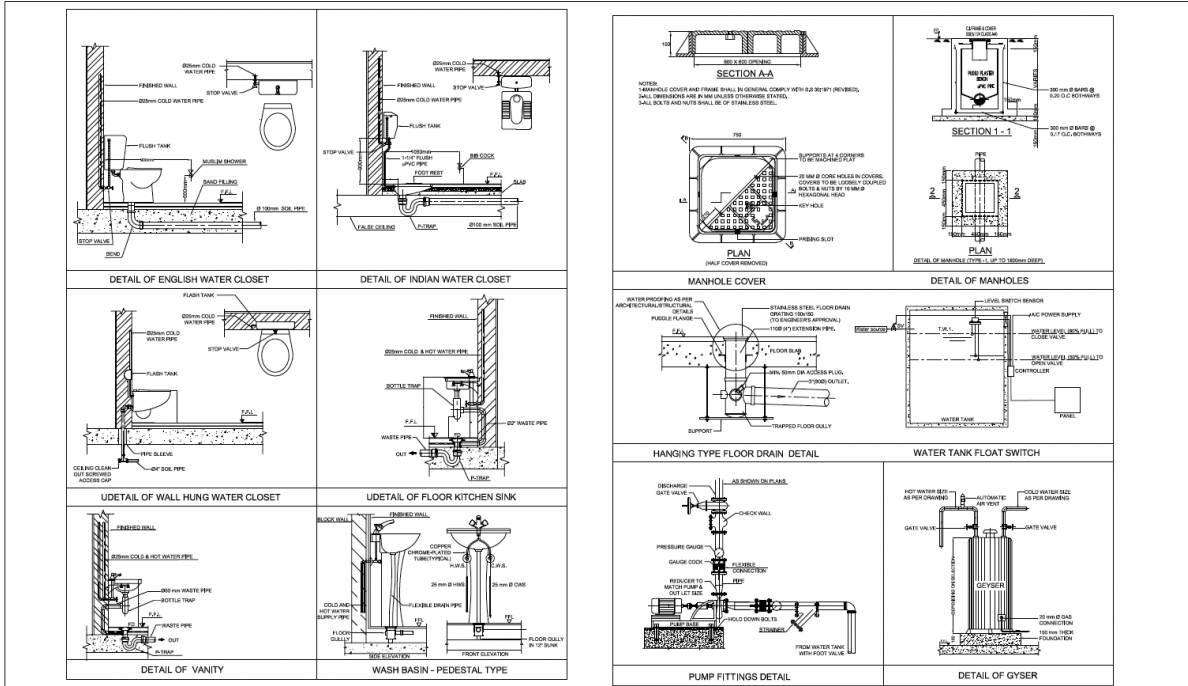
| | | | | | | | | | |
|--|---|---|------|------|-------------|------|------|-------------|----------------------------------|
| GOVERNMENT OF SINDH SCHOOL EDUCATION & LITERACY DEPARTMENT | SMALL WORKS, REMODEL & ESTABLISH OFFICE SPACE, PMJU-SELECT | TITLE:- ELECTRICAL LEGENDS | REV# | DATE | DESCRIPTION | DATE | APP# | PROJECT No# | DAT |
| | | | | | | | | | DRAWN BY: A-A CHECKED BY: Q-A |



DESIGN AND BUILT
 GOVERNMENT OF SINDH
 SCHOOL EDUCATION &
 LITERACY DEPARTMENT

PROJECT
 SMALL WORKS, REMODEL &
 ESTABLISH OFFICE SPACE,
 PMU-SELECT

TITLE
 LIGHTING
 LAYOUT PLAN

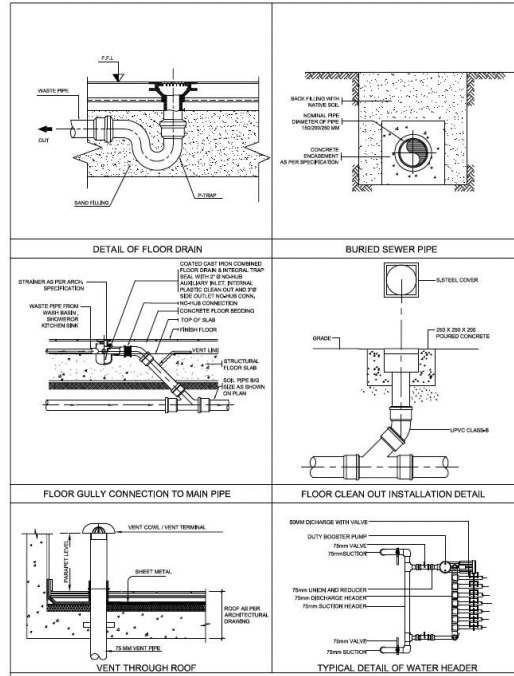


GOVERNMENT OF SINDH
SCHOOL EDUCATION &
LITERACY DEPARTMENT

STANDARD
DETAILS

| REV. | DATE | DESCRIPTION | BY | APPD. | PROJECT No. | DIST. |
|------|------|-------------|----|-------|-------------|-------|
| | | | | | | |
| | | | | | | |
| | | | | | | |
| | | | | | | |
| | | | | | | |

DRAWN BY: A-A
 CHECKED BY: O-A
 SCALE: AS SHOWN
 SHEET NO: P-02B

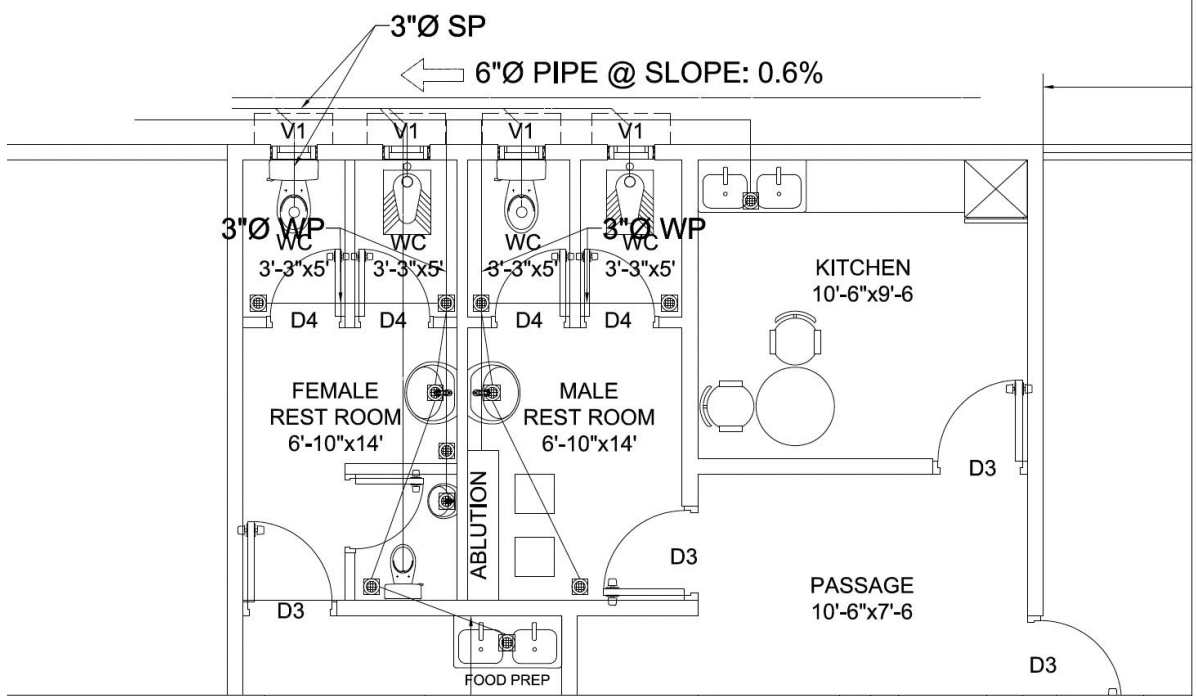


GOVERNMENT OF SINDH
SCHOOL EDUCATION &
LITERACY DEPARTMENT

**SMALL WORKS, REMODEL &
ESTABLISH OFFICE SPACE,
PMJU-SELECT**

TITLE:
**STANDARD
DETAILS**

| NO | DATE | DESCRIPTION | PREP | CHKD | Project Ref: | DATE |
|----|------|-------------|------|------|--------------|----------|
| | | | | | DRAWN BY | A-A |
| | | | | | CHECKED BY | O-A |
| | | | | | SCALE | AS SHOWN |
| | | | | | NO. | P-02C |



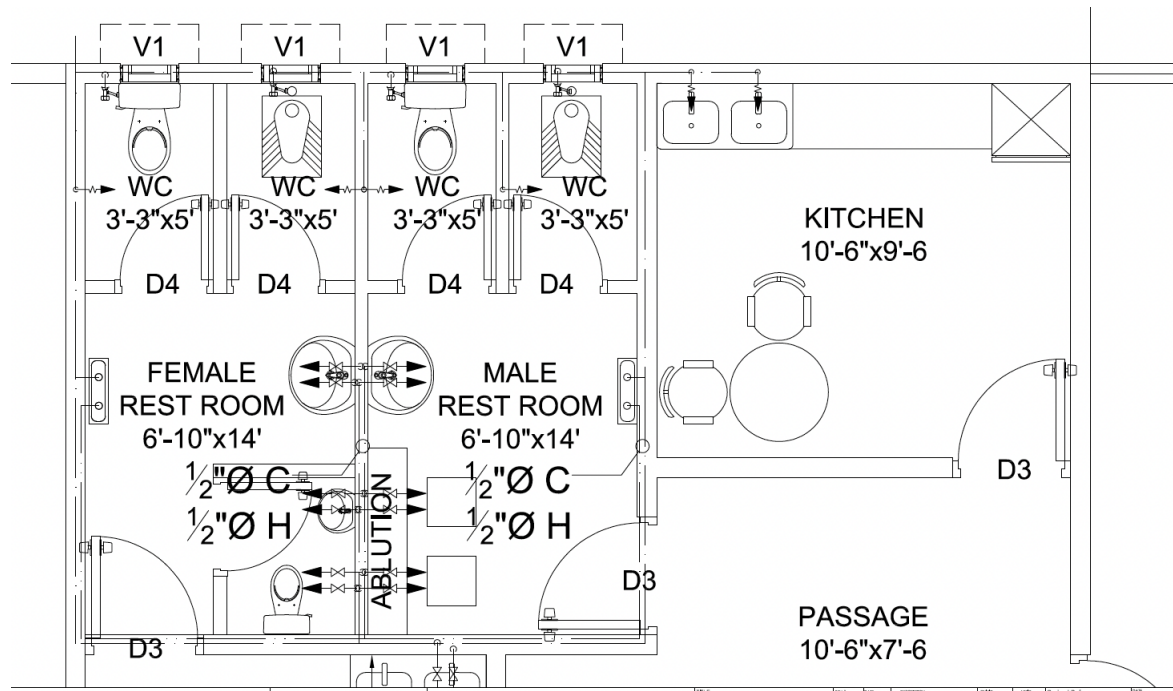
GOVERNMENT OF SINDH
SCHOOL EDUCATION &
LITERACY DEPARTMENT

SMALL WORKS, REMODEL &
ESTABLISH OFFICE SPACE,
PMIU-SELECT

DRAINAGE
LAYOUT PLAN

| REV. | DATE | DESCRIPTION | DATE | BY | PROJECT No. | SHEET |
|------|------|-------------|------|----|-------------|-------|
| | | | | | | |
| | | | | | | |
| | | | | | | |
| | | | | | | |

| | | | |
|------------|----|-------------|----------|
| DRAWN BY | AA | SCALE | AS SHOWN |
| CHECKED BY | CA | PROJECT NO. | P-02D |



GOVERNMENT OF SINDH
SCHOOL EDUCATION &
LITERACY DEPARTMENT

SMALL WORKS, REMODEL &
ESTABLISH OFFICE SPACE,
PMU-SELECT

WATER SUPPLY
LAYOUT PLAN

| REV. | DATE | DESCRIPTION | DATE | BY | PROJECT NO. | DATE |
|------|------|-------------|------|----|-------------|------|
| | | | | | | |
| | | | | | | |
| | | | | | | |
| | | | | | | |

| | | | |
|------------|-----|-------|----------|
| DRAWN BY | A-A | SCALE | AS SHOWN |
| CHECKED BY | O-A | DATE | P-02E |

Technical Proposal

The Contractor shall provide:

- the names and details of the suitably qualified key personnel to perform the Contract
- adequate information to demonstrate clearly that it has the capability to meet the requirements for the key equipment for the Contract
- information on Site organization
- its method statement on the execution of the works
- mobilization and construction schedule
- A summary of other information, if any, that the Contractor considers relevant

ANNEX 3: Contract Forms

Contract Agreement

THIS AGREEMENT made theday of, between **[name of the Employer]**. (hereinafter “the Employer”), of the one part, and **[name of the Contractor]**.(hereinafter “the Contractor”), of the other part:

WHEREAS the Employer invited a Quotation for the execution of Works, *[insert brief description of the Works]*, and has accepted the Quotation by the Contractor for the Works:

The Employer and the Contractor agree as follows:

1. In this Agreement words and expressions shall have the same meanings as are respectively assigned to them in the Contract documents referred to.
2. The following documents shall be deemed to form and be read and construed as part of this Agreement. This Agreement shall prevail over all other Contract documents.
 - (a) the Letter of Award of Contract
 - (b) the Contractor’s Quotation
 - (c) the Conditions of Contract, including Appendices
 - (d) the Specifications
 - (e) the Drawings
 - (f) Bill of Quantities;² and
 - (g) any other document listed in the CC as forming part of the Contract.
3. In consideration of the payments to be made by the Employer to the Contractor as specified in this Agreement, the Contractor hereby covenants with the Employer to execute the Works and to remedy defects therein in conformity in all respects with the provisions of the Contract.
4. The Employer hereby covenants to pay the Contractor in consideration of the execution and completion of the Works and the remedying of defects therein, the Contract Price or such other sum as may become payable under the provisions of the Contract at the times and in the manner prescribed by the Contract.

² In lump-sum contracts, delete “Bill of Quantities” and replace with “Activity Schedule.”

IN WITNESS whereof the parties hereto have caused this Agreement to be executed in accordance with the laws of ***[insert the name of the Contract governing law country]*** on the day, month and year specified above.

[To facilitate this emergency procurement, if acceptable to the Employer and the Contractor, electronic signature of the Contract Agreement such as using DocuSign is recommended.]

Signed by: _____
for and on behalf of the Employer

Signed by: _____
for and on behalf the Contractor

in the
presence
of: _____
Witness, Name, Signature, Address, Date

in the
presence
of: _____
Witness, Name, Signature, Address, Date

Conditions of Contract

Table of Clauses

| | |
|---|-----------|
| A. General..... | 27 |
| 1. Definitions..... | 27 |
| 2. Contract Specific Information..... | 30 |
| 3. Interpretation..... | 33 |
| 4. Prohibitions..... | 33 |
| 5. Project Manager’s Decisions..... | 34 |
| 6. Subcontracting..... | 34 |
| 7. Cooperation..... | 34 |
| 8. Personnel and Equipment..... | 35 |
| 9. Employer’s and Contractor’s Risks..... | 38 |
| 10. Employer’s Risks..... | 38 |
| 11. Contractor’s Risks..... | 39 |
| 12. Insurance..... | 39 |
| 13. Site Data..... | 39 |
| 14. Contractor to Construct the Works..... | 39 |
| 15. Approval by the Project Manager..... | 39 |
| 16. Health, Safety and Protection of the Environment..... | 40 |
| 17. Archaeological and Geological Findings..... | 40 |
| 18. Possession of the Site..... | 40 |
| 19. Access to the Site..... | 40 |
| 20. Instructions, Inspections and Audits..... | 41 |
| 21. Appointment of the Adjudicator..... | 41 |
| 22. Procedure for Disputes..... | 42 |
| 23. Fraud and Corruption..... | 43 |
| 24. Security of the Site..... | 43 |
| B. Time Control..... | 43 |
| 25. Program and Progress Reports..... | 43 |
| 26. Extension of the Completion Date..... | 44 |
| 27. Acceleration..... | 44 |
| 28. Delays Ordered by the Project Manager..... | 44 |
| 29. Management Meetings..... | 44 |
| 30. Early Warning..... | 45 |
| C. Quality Control..... | 45 |
| 31. Identifying Defects..... | 45 |
| 32. Tests..... | 45 |
| 33. Correction of Defects..... | 45 |

| | |
|---|-----------|
| 34. Uncorrected Defects | 45 |
| D. Cost Control | 46 |
| 35. Contract Price..... | 46 |
| 36. Changes in the Contract Price..... | 46 |
| 37. Variations | 46 |
| 38. Payment Certificates..... | 47 |
| 39. Payments..... | 47 |
| 40. Compensation Events | 48 |
| 41. Tax..... | 49 |
| 42. Price Adjustment..... | 49 |
| 43. Retention | 49 |
| 44. Liquidated Damages and Bonuses | 50 |
| 45. Advance Payment | 50 |
| 46. Performance Security | 51 |
| 47. Dayworks..... | 51 |
| 48. Cost of Repairs | 51 |
| E. Finishing the Contract | 51 |
| 49. Completion..... | 51 |
| 50. Taking Over | 52 |
| 51. Final Account..... | 52 |
| 52. Operating and Maintenance Manuals..... | 52 |
| 53. Termination..... | 52 |
| 54. Payment upon Termination | 53 |
| 55. Property | 54 |
| 56. Release from Performance | 54 |
| 57. Suspension of Bank Loan or Credit | 54 |

Conditions of Contract

A. General

1. Definitions

- 1.1 The following words and expressions shall have the meanings hereby assigned to them. Boldface type is used to identify defined terms.
- (a) The **Accepted Contract Amount** means the amount accepted in the Letter of Award of Contract for the execution and completion of the Works and the remedying of any defects.
 - (b) The **Activity Schedule** is a schedule of the activities comprising the construction, installation, testing, and commissioning of the Works in a lump-sum contract. It includes a lump-sum price for each activity, which is used for valuations and for assessing the effects of Variations and Compensation Events.
 - (c) The **Adjudicator** is the person appointed jointly by the Employer and the Contractor to resolve disputes in the first instance, as provided for in **CC 21**.
 - (d) **“Bank”** means the World Bank and refers to the International Bank for Reconstruction and Development (IBRD) or the International Development Association (IDA).
 - (e) **Bill of Quantities** means the priced and completed Bill of Quantities forming part of the Contractor’s Quotation.
 - (f) **Compensation Events** are those defined in **CC 40**.
 - (g) The **Completion Date** is the date of completion of the Works as certified by the Project Manager, in accordance with **CC 49.1**.
 - (h) The **Contract** is the Contract between the Employer and the Contractor to execute, complete, and maintain the Works. It consists of the documents listed in **CC 3.3** below.
 - (i) The **Contractor** is the party whose Quotation to carry out the Works has been accepted by the Employer.

- (j) The **Contractor's Quotation** is the completed quotation document submitted by the Contractor to the Employer.
- (k) The **Contract Price** is the Accepted Contract Amount stated in the Letter of Award of Contract and thereafter as adjusted in accordance with the Contract.
- (l) **Days** are calendar days; months are calendar months.
- (m) **Dayworks** are varied work inputs subject to payment on a time basis for the Contractor's employees and Equipment, in addition to payments for associated Materials and Plant.
- (n) A **Defect** is any part of the Works not completed in accordance with the Contract.
- (o) The **Defects Liability Certificate** is the certificate issued by Project Manager upon correction of defects by the Contractor.
- (p) The **Defects Liability Period** is the period specified in **CC 2.12** and calculated from the Completion Date.
- (q) **Drawings** means the drawings of the Works, as included in the Contract, and any additional and modified drawings issued by (or on behalf of) the Employer in accordance with the Contract, include calculations and other information provided or approved by the Project Manager for the execution of the Contract.
- (r) The **Employer** is the party who employs the Contractor to carry out the Works, **as specified in CC 2.1.**
- (s) **Equipment** is the Contractor's machinery and vehicles brought temporarily to the Site to construct the Works.
- (t) "**In writing**" or "**written**" means hand-written, type-written, printed or electronically made, and resulting in a permanent record.
- (u) The **Intended Completion Date** is the date on which it is intended that the Contractor shall complete the Works as specified in **CC 2.1.**
- (v) **Materials** are all supplies, including consumables, used by the Contractor for incorporation in the Works.
- (w) **Plant** is any integral part of the Works that shall have a mechanical, electrical, chemical, or biological function.

- (x) The **Project Manager** is the person named in **CC 2.1** (or any other competent person appointed by the Employer and notified to the Contractor, to act in replacement of the Project Manager) who is responsible for supervising the execution of the Works and administering the Contract.
- (y) The **Site** is the area defined as such in the **CC 2.1**.
- (z) **Site Investigation Reports** are those, if any, that were included in the request for quotations documents and are factual and interpretative reports about the surface and subsurface conditions at the Site.
- (aa) **Specifications** means the Specifications of the Works included in the Contract and any modification or addition made or approved by the Project Manager.
- (bb) The **Start Date** is given in **CC 2.1**. It is the latest date when the Contractor shall commence execution of the Works.
- (cc) A **Subcontractor** is a person or corporate body who has a Contract with the Contractor to carry out a part of the work in the Contract, which includes work on the Site.
- (dd) **Temporary Works** are works designed, constructed, installed, and removed by the Contractor that are needed for construction or installation of the Works.
- (ee) A **Variation** is an instruction given by the Project Manager which varies the Works.
- (ff) The **Works** are what the Contract requires the Contractor to construct, install, and turn over to the Employer, as defined in the **CC 2.1**.
- (gg) **“Contractor’s Personnel”** refers to all personnel whom the Contractor utilizes on the Site or other places where the Works are carried out, including the staff, labor and other employees of each Subcontractor.
- (hh) **“Key Personnel”** means the positions (if any) of the Contractor’s personnel that are included in the contract.
- (ii) **“Sexual Exploitation and Abuse” “(SEA)”** means the following:
 - Sexual Exploitation** is defined as any actual or attempted abuse of position of vulnerability, differential power or trust, for sexual purposes, including, but not limited to, profiting monetarily,

socially or politically from the sexual exploitation of another;

Sexual Abuse is defined as the actual or threatened physical intrusion of a sexual nature, whether by force or under unequal or coercive conditions;

- (jj) **“Sexual Harassment” “(SH)”** is defined as unwelcome sexual advances, requests for sexual favors, and other verbal or physical conduct of a sexual nature by the Contractor’s Personnel with other Contractor’s or Employer’s Personnel; and
- (kk) **“Employer’s Personnel”** refers to the Project Manager and all other staff, labor and other employees (if any) of the Project Manager and of the Employer engaged in fulfilling the Employer’s obligations under the Contract; and any other personnel identified as Employer’s Personnel, by a notice from the Employer or the Project Manager to the Contractor.

2. Contract Specific Information

2.1 General

- (a) The **Employer** is: Sindh Early Learning Enhancement through Classroom Transformation SELECT Sindh Early Learning Enhancement through Classroom Transformation (SELECT), School Education & Literacy Department Govt Of Sindh
- (b) The **Intended Completion Date** for the whole of the Works shall be: **6 Month from the date of signing of Contract**
- (c) The **Project Manager** is: Mr.Owais Ali & Mr .Muhammad Suhail.
- (d) The **Site** is located at Sindh Early Learning Enhancement through Classroom Transformation SELECT AT Reform Support Unit 47-E/1, Street No. 48, PECHS Block-6, Near Nursery Furniture Market, Shahrah-e-Faisal, Karachi and is defined in drawings No. ***[insert numbers]***
- (e) The **Start Date** shall be: ***[insert date]***.
- (f) The Works consist of: ***[insert brief summary, including relationship to other contracts under the Project]***

2.2 Any notice given by one Party to the other pursuant to the Contract shall be in writing to the address hereafter using the

quickest available method such as electronic mail with proof of receipt.

Address for notices to the Employer:

Name: Junaid Hameed Samo

Title/position: Project Director

Address: Sindh Early Learning Enhancement through Classroom Transformation SELECT AT Reform Support Unit 47-E/1, Street No. 48, PECHS Block-6, Near Nursery Furniture Market, Shahrah-e-Faisal, Karachi.

Electronic mail address: pcselectseld@gmail.com

Address for notices to the Contractor:

[insert the name of officer authorized to receive notices]

[title/position]

[department/work unit]

[address]

[Electronic mail address]

2.3 In accordance with **CC 3.2, Sectional Completions** are: **[insert nature and dates, if appropriate; otherwise delete]**

2.4 The **language** of the contract is **English**

2.5 The Contract shall be governed by the **law** of **Pakistan**.

The contract specific information for the listed Conditions of Contract (CC) clauses follows:

2.6 **CC 12:** The minimum **insurance** amounts and deductibles shall be:

(a) for loss or damage to the Works, Plant and Materials:

1,000,000-PKR.

(b) For loss or damage to Equipment: **1,000,000-PKR.**

(c) for loss or damage to property (except the Works, Plant, Materials, and Equipment) in connection with Contract **1,000,000-PKR.**

(d) for personal injury or death: of the Contractor's employees: **50,000,000-PKR.** of other people:

50,000,000-PKR.

- 2.7 **CC 13: Site Data** are: **Project Coordinator office for Sindh Early Learning Enhancement through Classroom Transformation SELECT AT Reform Support Unit 47-E/1, Street No. 48, PECHS Block-6, Near Nursery Furniture Market, Shahrah-e-Faisal, Karachi.**
- 2.8 **CC 18: Site Possession Date(s)** shall be: **Project Coordinator office for Sindh Early Learning Enhancement through Classroom Transformation SELECT AT Reform Support Unit 47-E/1, Street No. 48, PECHS Block-6, Near Nursery Furniture Market, Shahrah-e-Faisal, Karachi.)**
and date.....
- 2.9 **CC 21: Appointing Authority** of Adjudicator: **Junaid Hameed Samo -CPM RSU**
- 2.10 **CC 25.1:** A **Program** for the Works shall be submitted within: **7** days from the date of the Letter of Award of Contract.
- 2.11 **CC 25.2:** The period for submission of **progress reports** is:**weekly**
- 2.12 **CC 33:** The **Defects Liability Period** shall be: **60** days from the date of Completion.
- 2.13 **CC 43:** The **retention** amount shall **be 2%.**
- 2.14 **CC 44.1:** The **liquidated damages** for the whole of the Works shall be: **0.1%** of the final Contract Price per day..
- 2.15 **CC 44.1:** The **maximum amount of liquidated damages** for the whole of the Works is: **10%** of the final Contract Price.
- 2.16 **CC 44.3:** the **Bonus** for the whole of the Works is: **N/A**
- 2.17 **CC 45:** The **Advance Payment** shall be: **10%** of the Accepted Contract Amount and shall be paid to the Contractor no later than 7 days after the Contractor submits an acceptable Bank Guarantee **upon the submission of same amount Bank Guarantee.**
- 2.18 **CC 46:** The Performance Security amount shall be for an amount of: 10% of the Accepted Contract Amount in the shape of Bank Gaurantee. (Not Applicable)
- 2.19 operating and maintenance manuals are required is **10 days after the completion of contract.** In accordance with **CC 52.1,** the date by which “as built” drawings are required is **10 days after completion of contract.**
- 2.20 **CC 52.2:** The amount to be withheld: **2%.**

2.21 **CC 54.1:** The percentage to apply to the value of the work not completed is: **5%**

3. Interpretation

3.1 In interpreting these CC, words indicating one gender include all genders. Words indicating the singular also include the plural and words indicating the plural also include the singular. Headings have no significance. Words have their normal meaning under the language of the Contract unless specifically defined. The Project Manager shall provide instructions clarifying queries about these CC.

3.2 If sectional completion is specified in **CC 2.3**, references in the CC to the Works, the Completion Date, and the Intended Completion Date apply to any Section of the Works (other than references to the Completion Date and Intended Completion Date for the whole of the Works).

3.3 The documents forming the Contract shall be interpreted in the following order of priority:

- (a) the Contract Agreement,
- (b) The Letter of Award of Contract
- (c) The Contractor's Quotation,
- (d) the Conditions of Contract, including Appendices
- (e) the Specifications,
- (f) the Drawings,
- (g) the Bill of Quantities,¹ and
- (h) any other document ***[include other documents if any]***.

4. Prohibitions

4.1 Throughout the execution of the Contract, the Contractor shall comply with the import of goods and services prohibitions in the Employer's country when

- (a) as a matter of law or official regulations, the Borrower's country prohibits commercial relations with that country; or
- (b) by an act of compliance with a decision of the United Nations Security Council taken under Chapter VII of the Charter of the United Nations, the Borrower's Country prohibits any import of goods from that country or any

¹ In lump-sum contracts, delete "Bill of Quantities" and replace with "Activity Schedule."

payments to any country, person, or entity in that country.

- 5. Project Manager's Decisions**
 - 5.1 Except where otherwise specifically stated, the Project Manager shall decide contractual matters between the Employer and the Contractor in the role representing the Employer.

- 6. Subcontracting**
 - 6.1 The Contractor may subcontract with the approval of the Project Manager but may not assign the Contract without the approval of the Employer in writing. Subcontracting shall not alter the Contractor's obligations.

- 7. Cooperation**
 - 7.1 The Contractor shall cooperate with and allow appropriate opportunities for other contractors, public authorities, utilities, and the Employer, to carry out on or near the Site work, if any, not included in the Contract.

8. Personnel and Equipment

- 8.1 The Contractor shall employ the Key Personnel and use the Equipment identified in its quotation, to carry out the Works or other personnel and Equipment approved by the Project Manager. The Project Manager shall approve any proposed replacement of Key Personnel and Equipment only if their relevant qualifications or characteristics are substantially equal to or better than those proposed in the quotation.
- 8.2 The Project Manager may require the Contractor to remove (or cause to be removed) any person employed on the Site or Works, including the Key Personnel (if any), who:
- (a) persists in any misconduct or lack of care;
 - (b) carries out duties incompetently or negligently;
 - (c) fails to comply with any provision of the Contract;
 - (d) persists in any conduct which is prejudicial to safety, health, or the protection of the environment;
 - (e) engages in Sexual Harassment, Sexual Exploitation, Sexual Abuse or in any form of sexual activity with individuals under the age of 18 except in case of pre-existing marriage;
 - (f) based on reasonable evidence, is determined to have engaged in Fraud and Corruption during the execution of the Works; or
 - (g) has been recruited from the Employer's Personnel.

As appropriate, the Contractor shall then promptly appoint (or cause to be appointed) a suitable replacement with equivalent skills and experience.

8.3 Labor

8.3.1 Engagement of Staff and Labor. The Contractor shall provide and employ on the Site for the execution of the Works such skilled, semi-skilled and unskilled labor as is necessary for the proper and timely execution of the Contract. The Contractor is encouraged, to the extent practicable and reasonable, to employ staff and labor with appropriate qualifications and experience from sources within the Country.

8.3.2 Labor Laws. The Contractor shall comply with all the relevant labor laws applicable to the Contractor's Personnel, including laws relating to their employment, health, safety, welfare,

immigration and emigration, and shall allow them all their legal rights.:

8.3.3 Facilities for Staff and Labor. [if facilities for staff and labor are to be provided by the Contractor, insert this sub-clause; otherwise delete] The Contractor shall provide and maintain all necessary accommodation and welfare facilities for the Contractor's Personnel.

8.3.4 Supply of Foodstuffs. [if food to its personnel is to be provided by the Contractor, insert this sub-clause; otherwise delete] The Contractor shall arrange for the provision of a sufficient supply of suitable food at reasonable prices for the Contractor's Personnel for the purposes of or in connection with the Contract.

8.3.5 Supply of Water. [if water to its personnel is to be provided by the Contractor, insert this sub-clause; otherwise delete] The Contractor shall, having regard to local conditions, provide on the Site an adequate supply of drinking and other water for the use of the Contractor's Personnel.

8.3.6 Forced Labor. The Contractor, including its Subcontractors, shall not employ or engage forced labor. Forced labor *consists* of any work or service, not voluntarily performed, that is exacted from an individual under threat of force or penalty, and includes any kind of involuntary or compulsory labor, such as indentured labor, bonded labor or similar labor-contracting arrangements.

No persons shall be employed or engaged who have been subject to trafficking. Trafficking in persons is defined as the recruitment, transportation, transfer, harboring or receipt of persons by means of the threat or use of force or other forms of coercion, abduction, fraud, deception, abuse of power, or of a position of vulnerability, or of the giving or receiving of payments or benefits to achieve the consent of a person having control over another person, for the purposes of exploitation.

8.3.7 Child Labor. The Contractor, including its Subcontractors, shall *not* employ or engage a child under the age of 14 unless the national law specifies a higher age (the minimum age).

The Contractor, including its Subcontractors, shall not employ or engage a child between the minimum age and the age of 18 in a manner that is likely to be hazardous, or to interfere with, the child's education, or to be harmful to the child's

health or physical, mental, spiritual, moral, or social development.

The Contractor including its Subcontractors, shall only employ or engage children between the minimum age and the age of 18 after an appropriate risk assessment has been conducted by the Contractor with the Project Manager's approval. The Contractor shall be subject to regular monitoring by the Project Manager that includes monitoring of health, working conditions and hours of work.

Work considered hazardous for children is work that, by its nature or the circumstances in which it is carried out, is likely to jeopardize the health, safety, or morals of children. Such work activities prohibited for children include work:

- (a) with exposure to physical, psychological or sexual abuse;
- (b) underground, underwater, working at heights or in confined spaces;
- (c) with dangerous machinery, equipment or tools, or involving handling or
- (d) transport of heavy loads;
- (e) in unhealthy environments exposing children to hazardous substances, agents, or processes, or to temperatures, noise or vibration damaging to health; or
- (f) under difficult conditions such as work for long hours, during the night or in confinement on the premises of the employer.

8.3.8 *Employment Records of Workers.* The Contractor shall keep complete and accurate records of the employment of labor at the Site.

8.3.9 *Non-Discrimination and Equal Opportunity.* The Contractor shall not make decisions relating to the employment or treatment of Contractor's Personnel on the basis of personal characteristics unrelated to inherent job requirements. The Contractor shall base the employment of Contractor's Personnel on the principle of equal opportunity and fair treatment, and shall not discriminate with respect to any aspects of the employment relationship.

8.3.10 *Contractor's Personnel Grievance Mechanism.* The Contractor shall have a proportionate grievance mechanism for Contractor's Personnel.

8.3.11 *Awareness of Contractor's Personnel.* The Contractor shall provide appropriate awareness to relevant Contractor's Personnel on any applicable environmental and social aspects of the Contract, including on health, safety and prohibition of SEA and SH.

9. Employer's and Contractor's Risks

9.1 The Employer carries the risks which this Contract states are Employer's risks, and the Contractor carries the risks which this Contract states are Contractor's risks.

10. Employer's Risks

10.1 From the Start Date until the Defects Liability Certificate has been issued, the following are Employer's risks:

- (a) The risk of personal injury, death, or loss of or damage to property (excluding the Works, Plant, Materials, and Equipment), which are due to
 - (i) use or occupation of the Site by the Works or for the purpose of the Works, which is the unavoidable result of the Works or
 - (ii) negligence, breach of statutory duty, or interference with any legal right by the Employer or by any person employed by or contracted to him except the Contractor.
- (b) The risk of damage to the Works, Plant, Materials, and Equipment to the extent that it is due to a fault of the Employer or in the Employer's design, or due to war or radioactive contamination directly affecting the country where the Works are to be executed.

10.2 From the Completion Date until the Defects Liability Certificate has been issued, the risk of loss of or damage to the Works, Plant, and Materials is an Employer's risk except loss or damage due to

- (a) a Defect which existed on the Completion Date,
- (b) an event occurring before the Completion Date, which was not itself an Employer's risk, or
- (c) the activities of the Contractor on the Site after the Completion Date.

- 11. Contractor's Risks**
- 11.1 From the Starting Date until the Defects Liability Certificate has been issued, the risks of personal injury, death, and loss of or damage to property (including, without limitation, the Works, Plant, Materials, and Equipment) which are not Employer's risks are Contractor's risks.
- 12. Insurance**
- 12.1 The Contractor shall provide, in the joint names of the Employer and the Contractor, insurance cover from the Start Date to the end of the Defects Liability Period, in the amounts and deductibles specified in **CC 2.6**, for listed events which are due to the Contractor's risks:
- 12.2 Policies and certificates for insurance shall be delivered by the Contractor to the Project Manager for the Project Manager's approval before the Start Date. All such insurance shall provide for compensation to be payable in the types and proportions of currencies required to rectify the loss or damage incurred.
- 12.3 If the Contractor does not provide any of the policies and certificates required, the Employer may effect the insurance which the Contractor should have provided and recover the premiums the Employer has paid from payments otherwise due to the Contractor or, if no payment is due, the payment of the premiums shall be a debt due.
- 12.4 Alterations to the terms of an insurance shall not be made without the approval of the Project Manager.
- 12.5 Both parties shall comply with any conditions of the insurance policies.
- 13. Site Data**
- 13.1 The Contractor shall be deemed to have examined any Site Data referred to in **CC 2.7**, supplemented by any information available to the Contractor.
- 14. Contractor to Construct the Works**
- 14.1 The Contractor shall construct and install the Works in accordance with the Specifications and Drawings.
- 15. Approval by the Project Manager**
- 15.1 The Contractor shall submit Specifications and Drawings showing the proposed Temporary Works to the Project Manager, for his approval.
- 15.2 The Contractor shall be responsible for design of Temporary Works.

- 15.3 The Project Manager's approval shall not alter the Contractor's responsibility for design of the Temporary Works.
- 15.4 The Contractor shall obtain approval of third parties to the design of the Temporary Works, where required.
- 15.5 All Drawings prepared by the Contractor for the execution of the temporary or permanent Works, are subject to prior approval by the Project Manager before this use.
- 16. Health, Safety and Protection of the Environment**
- 16.1 The Contractor shall be responsible for the safety of all activities on the Site, and for taking care of the health and safety of all persons entitled to be on the Site and any other place where the Works are being executed.
- 16.2 The Contractor shall comply with all applicable health and safety regulations and laws.
- 16.3 Protection of the environment
- (a) The Contractor shall take all necessary measures to: protect the environment (both on and off the Site); and
- (b) limit damage and nuisance to people and property resulting from pollution, noise and other results of the Contractor's operations and/ or activities.
- In the event of damage to the environment, property and/or nuisance to people, on or off Site as a result of the Contractor's operations, the Contractor shall agree with the Project Manager the appropriate actions and time scale to remedy, as practicable, the damaged environment to its former condition. The Contractor shall implement such remedies at its cost to the satisfaction of the Project Manager.
- 17. Archaeological and Geological Findings**
- 17.1 All fossils, coins, articles of value or antiquity, structures, groups of structures, and other remains or items of geological, archaeological, paleontological, historical, architectural or religious interest found on the Site shall be placed under the care and custody of the Employer.
- 18. Possession of the Site**
- 18.1 If possession of a part is not given by the date stated in **CC 2.8**, the Employer shall be deemed to have delayed the start of the relevant activities, and this shall be a Compensation Event.
- 19. Access to the Site**
- 19.1 The Contractor shall allow the Project Manager and any person authorized by the Project Manager access to the Site and to

any place where work in connection with the Contract is being carried out or is intended to be carried out.

20. Instructions, Inspections and Audits

20.1 The Contractor shall carry out all instructions of the Project Manager which comply with the applicable laws where the Site is located.

20.2 The Contractor shall keep and shall make all reasonable efforts to cause its Subcontractors and subconsultants to keep, accurate and systematic accounts and records in respect of the Works in such form and details as will clearly identify relevant time changes and costs.

20.3 Inspections & Audit by the Bank

Pursuant to paragraph 2.2 e. of Appendix A to the CC- Fraud and Corruption, the Contractor shall permit and shall cause its agents (where declared or not), subcontractors, subconsultants, service providers, suppliers, and personnel, to permit, the Bank and/or persons appointed by the Bank to inspect the site and/or the accounts, records and other documents relating to the procurement process, selection and/or contract execution, and to have such accounts, records and other documents audited by auditors appointed by the Bank. The Contractor's and its Subcontractors' and subconsultants' attention is drawn to **CC 23.1** (Fraud and Corruption) which provides, inter alia, that acts intended to materially impede the exercise of the Bank's inspection and audit rights constitute a prohibited practice subject to contract termination (as well as to a determination of ineligibility pursuant to the Bank's prevailing sanctions procedures).

21. Appointment of the Adjudicator

21.1 The Employer and the Contractor shall jointly appoint an adjudicator with relevant experience, within 7 (seven) days of contract signature. In case of disagreement between the Employer and the Contractor on the appointment of the Adjudicator within this period, either party will request the Appointing authority stated in **CC 2.9**, to appoint the Adjudicator within 7 (seven) days of receipt of such request.

21.2 Should the Adjudicator resign or die, or should the Employer and the Contractor agree that the Adjudicator is not functioning in accordance with the provisions of the Contract, a new Adjudicator shall be jointly appointed by the Employer and the Contractor. In case of disagreement between the Employer and the Contractor, within 14 (fourteen) days, the

Adjudicator shall be designated by the Appointing Authority stated in **CC 2.9**, at the request of either party, within 7 (seven) days of receipt of such request.

22. Procedure for Disputes

- 22.1 If the Contractor believes that a decision taken by the Project Manager was either outside the authority given to the Project Manager by the Contract or that the decision was wrongly taken, the decision shall be referred to the Adjudicator within 14 (fourteen) days of the notification of the Project Manager's decision.
- 22.2 The Adjudicator shall give a decision in writing within 14 (fourteen) days of receipt of a notification of a dispute. The adjudicator's cost (hourly fee and reimbursable expenses) shall be divided equally between the Employer and the Contractor, whatever decision is reached by the Adjudicator.
- 22.3 Both parties shall attempt to settle the dispute amicably before commencement of arbitration. If the dispute is not settled amicably within 14 (fourteen) days of the Adjudicator's written decision, either party may refer a decision of the Adjudicator to an Arbitrator. If neither party refers the dispute to arbitration within 28 (twenty eight) days of the Adjudicator's written decision, the Adjudicator's decision shall be final and binding. The arbitration shall be conducted in accordance with the following arbitration procedures. ***[For smaller contracts, the institution is usually from the Employer's Country. For larger contracts, and contracts that are likely to be awarded to international contractors, it is recommended that the arbitration procedure of an international institution is used]***

[CC 22.3(a) shall be retained in the case of a Contract with a foreign Contractor and CC 22.3 (b) shall be retained in the case of a Contract with a national of the Employer's Country.]

(a) Contract with foreign Contractor:

[unless the Employer chooses the commercial arbitration rules of another international arbitral institution, the following sample clause should be inserted:]

All disputes arising out of or in connection with the present contract shall be finally settled under the Rules of Arbitration of the International Chamber of Commerce by

one or more arbitrators appointed in accordance with the said Rules.

- (b) Contracts with Contractor national of the Employer's Country:

In the case of a dispute between the Employer and a Contractor who is a national of the Employer's Country, the dispute shall be referred to adjudication or arbitration in accordance with the laws of the Employer's Country.]

23. Fraud and Corruption

23.1 The Bank requires compliance with the Bank's Anti-Corruption Guidelines and its prevailing sanctions policies and procedures as set forth in the WBG's Sanctions Framework, as set forth in Appendix A to the CC.

23.2 The Employer requires the Contractor to disclose any commissions or fees that may have been paid or are to be paid to agents or any other party with respect to the to the request for quotations or execution of the Contract. The information disclosed must include at least the name and address of the agent or other party, the amount and currency, and the purpose of the commission, gratuity or fee.

24. Security of the Site

24.1 ***[Insert the following where the Contractor is responsible for the security of the Site]*** The Contractor shall be responsible for the security of the Site, and:

- (a) for keeping unauthorized persons off the Site;
- (b) authorized persons shall be limited to the Contractor's Personnel, the Employer's Personnel, and to any other personnel identified as authorized personnel (including the Employer's other contractors on the Site), by a notice from the Employer or the Project Manager to the Contractor.

The Contractor shall require the security personnel to act within the applicable Laws.

B. Time Control

25. Program and Progress Reports

25.1 The Contractor shall submit for approval a Program for the Works, within the period stated in **CC 2.10**. The Contractor may revise the Program and submit it to the Project Manager again at any time. A revised Program shall show any effect of Variations and Compensation Events.

25.2 The Contractor shall monitor progress of the Works and submit progress reports to the Project manager at intervals no longer than the period stated in **CC 2.11**.

25.3 In addition to the progress reports stated in **CC 2.11**, the Contractor shall inform the Project Manager immediately of any allegation, incident or accident in the Site, which has or is likely to have a significant adverse effect including, but is not limited to, any incident or accident causing fatality or serious injury; significant adverse effects or damage to private property; or any allegation of SEA and/or SH.

The Contractor shall provide full details of such incidents or accidents to the Project Manager within the timeframe agreed with the Project Manager.

26. Extension of the Completion Date

26.1 The Project Manager shall extend the Intended Completion Date if a Compensation Event occurs or a Variation is issued which makes it impossible for Completion to be achieved by the Intended Completion Date without the Contractor taking steps to accelerate the remaining work, which would cause the Contractor to incur additional cost.

26.2 If the Contractor has failed to give early warning of a delay or has failed to cooperate in dealing with a delay, the delay by this failure shall not be considered in assessing the new Intended Completion Date.

27. Acceleration

27.1 When the Employer wants the Contractor to finish before the Intended Completion Date, the Project Manager shall obtain priced proposals for achieving the necessary acceleration from the Contractor. If the Employer accepts these proposals, the Intended Completion Date shall be adjusted accordingly and confirmed by both the Employer and the Contractor.

27.2 If the Contractor's priced proposals for an acceleration are accepted by the Employer, they are incorporated in the Contract Price and treated as a Variation.

28. Delays Ordered by the Project Manager

28.1 The Project Manager may instruct the Contractor to delay the start or progress of any activity within the Works.

29. Management Meetings

29.1 Either the Project Manager or the Contractor may require the other to attend a management meeting. The business of a management meeting shall be to review the plans for

remaining work and to deal with matters raised in accordance with the early warning procedure.

- 30. Early Warning**
- 30.1 The Contractor shall warn the Project Manager at the earliest opportunity of specific likely future events or circumstances that may adversely affect the quality of the work, increase the Contract Price, or delay the execution of the Works.
- 30.2 The Contractor shall cooperate with the Project Manager in making and considering proposals for how the effect of such an event or circumstance can be avoided or reduced by anyone involved in the work and in carrying out any resulting instruction of the Project Manager.

C. Quality Control

- 31. Identifying Defects**
- 31.1 The Project Manager shall check the Contractor's work and notify the Contractor of any Defects that are found. Such checking shall not affect the Contractor's responsibilities. The Project Manager may instruct the Contractor to search for a Defect and to uncover and test any work that the Project Manager considers may have a Defect.
- 32. Tests**
- 32.1 If the Project Manager instructs the Contractor to carry out a test not specified in the Specifications to check whether any work has a Defect and the test shows that it does, the Contractor shall pay for the test and any samples. If there is no Defect, the test shall be a Compensation Event.
- 33. Correction of Defects**
- 33.1 The Project Manager shall give notice to the Contractor of any Defects before the end of the Defects Liability specified in **CC 2.12**. The Defects Liability Period shall be extended for as long as Defects remain to be corrected.
- 33.2 Every time notice of a Defect is given, the Contractor shall correct the notified Defect within the length of time specified by the Project Manager's notice.
- 34. Uncorrected Defects**
- 34.1 If the Contractor has not corrected a Defect within the time specified in the Project Manager's notice, the Project Manager shall assess the cost of having the Defect corrected, and the Contractor shall pay this amount.

D. Cost Control

- 35. Contract Price²** 35.1 The Bill of Quantities shall contain priced items for the Works to be performed by the Contractor. The Bill of Quantities is used to calculate the Contract Price. The Contractor will be paid for the quantity of the work accomplished at the rate in the Bill of Quantities for each item.
- 36. Changes in the Contract Price³**
- 36.1 If the final quantity of the work done differs from the quantity in the Bill of Quantities for the particular item by more than 25 percent, provided the change exceeds 1 percent of the Accepted Contract Amount, the Project Manager shall adjust the rate to allow for the change. The Project Manager shall not adjust rates from changes in quantities if thereby the Accepted Contract Amount is exceeded by more than 15 percent, except with the prior approval of the Employer.
- 36.2 If requested by the Project Manager, the Contractor shall provide the Project Manager with a detailed cost breakdown of any rate in the Bill of Quantities.
- 37. Variations**
- 37.1 All Variations shall be included in updated Programs⁴ produced by the Contractor.
- 37.2 The Contractor shall provide the Project Manager with a quotation for carrying out the Variation when requested to do so by the Project Manager. The Project Manager shall assess the quotation, which shall be given within 7 (seven) days of the request or within any longer period stated by the Project Manager and before the Variation is ordered.
- 37.3 If the Contractor's quotation is unreasonable, the Project Manager may order the Variation and make a change to the Contract Price, which shall be based on the Project Manager's

² In lump-sum contracts, replace CC 35.1 as follows:

35.1 The Contractor shall provide updated Activity Schedules within 7 (seven) days of being instructed to by the Project Manager. The Activity Schedule shall contain the priced activities for the Works to be performed by the Contractor. The Activity Schedule is used to monitor and control the performance of activities on which basis the Contractor will be paid. If payment for materials on site shall be made separately, the Contractor shall show delivery of Materials to the Site separately on the Activity Schedule.

³ In lump-sum contracts, replace entire CC 36 with new CC 36.1, as follows:

36.1 The Activity Schedule shall be amended by the Contractor to accommodate changes of Program or method of working made at the Contractor's own discretion. Prices in the Activity Schedule shall not be altered when the Contractor makes such changes to the Activity Schedule.

⁴ In lump-sum contracts, add "and Activity Schedules" after "Programs."

own forecast of the effects of the Variation on the Contractor's costs.

37.4 If the Project Manager decides that the urgency of varying the work would prevent a quotation being given and considered without delaying the work, no quotation shall be given and the Variation shall be treated as a Compensation Event.

37.5 The Contractor shall not be entitled to additional payment for costs that could have been avoided by giving early warning.

37.6 If the work in the Variation corresponds to an item description in the Bill of Quantities and if, in the opinion of the Project Manager, the quantity of work above the limit stated in **CC 36.1** or the timing of its execution do not cause the cost per unit of quantity to change, the rate in the Bill of Quantities shall be used to calculate the value of the Variation. If the cost per unit of quantity changes, or if the nature or timing of the work in the Variation does not correspond with items in the Bill of Quantities, the quotation by the Contractor shall be in the form of new rates for the relevant items of work.⁵

38. Payment Certificates

38.1 The Contractor shall submit to the Project Manager monthly statements of the estimated value of the work executed less the cumulative amount certified previously.

38.2 The Project Manager shall check the Contractor's monthly statement and certify the amount to be paid to the Contractor.

38.3 The value of work executed shall be determined by the Project Manager.

38.4 The value of work executed shall comprise the value of the quantities of work in the Bill of Quantities that have been completed.⁶

38.5 The value of work executed shall include the valuation of Variations and Compensation Events.

38.6 The Project Manager may exclude any item certified in a previous certificate or reduce the proportion of any item previously certified in any certificate in the light of later information.

39. Payments

39.1 Payments shall be adjusted for deductions for advance payments and retention. The Employer shall pay the

⁵ In lump-sum contracts, delete this paragraph.

⁶ In lump-sum contracts, replace this paragraph with the following: "The value of work executed shall comprise the value of completed activities in the Activity Schedule."

Contractor the amounts certified by the Project Manager within 28 (twenty eight) days of the date of each certificate. If the Employer makes a late payment, the Contractor shall be paid interest on the late payment in the next payment. The interest rate shall be at the prevailing rate of interest for commercial borrowing for each of the currencies in which payments are made.

39.2 Items of the Works for which no rate or price has been entered in shall not be paid for by the Employer and shall be deemed covered by other rates and prices in the Contract.

40. Compensation Events

40.1 The following shall be Compensation Events:

- (a) The Employer does not give access to a part of the Site by the Site Possession Date pursuant to **CC 2.8**.
- (b) The Project Manager orders a delay or does not issue Drawings, Specifications, or instructions required for execution of the Works on time.
- (c) The Project Manager instructs the Contractor to uncover or to carry out additional tests upon work, which is then found to have no Defects.
- (d) The Project Manager unreasonably does not approve a subcontract to be let.
- (e) Ground conditions are substantially more adverse than could reasonably have been assumed before issuance of the Letter of Award of Contract from the information issued to Contractors (including the Site Investigation Reports), from information available publicly and from a visual inspection of the Site.
- (f) The Project Manager gives an instruction for dealing with an unforeseen condition, caused by the Employer, or additional work required for safety or other reasons.
- (g) Other contractors, public authorities, utilities, or the Employer does not work within the dates and other constraints stated in the Contract, and they cause delay or extra cost to the Contractor.
- (h) The advance payment is delayed.
- (i) The effects on the Contractor of any of the Employer's Risks.

(j) The Project Manager unreasonably delays issuing a Certificate of Completion.

40.2 If a Compensation Event would cause additional cost or would prevent the work being completed before the Intended Completion Date, the Contract Price shall be increased and/or the Intended Completion Date shall be extended. The Project Manager shall decide whether and by how much the Contract Price shall be increased and whether and by how much the Intended Completion Date shall be extended.

40.3 As soon as information demonstrating the effect of each Compensation Event upon the Contractor's forecast cost has been provided by the Contractor, it shall be assessed by the Project Manager, and the Contract Price shall be adjusted accordingly. If the Contractor's forecast is deemed unreasonable, the Project Manager shall adjust the Contract Price based on the Project Manager's own forecast. The Project Manager shall assume that the Contractor shall react competently and promptly to the event.

40.4 The Contractor shall not be entitled to compensation to the extent that the Employer's interests are adversely affected by the Contractor's not having given early warning or not having cooperated with the Project Manager.

41. Tax

41.1 The Project Manager shall adjust the Contract Price if taxes, duties, and other levies are changed between the date of submission of quotations for the Contract and the date of the last Completion certificate. The adjustment shall be the change in the amount of tax payable by the Contractor.

42. Price Adjustment

42.1 **Prices shall not be adjusted for any fluctuations in the cost of inputs.**

43. Retention

43.1 The Employer shall retain from each payment due to the Contractor the proportion stated in **CC 2.13** until Completion of the whole of the Works.

43.2 Upon the issue of a Certificate of Completion of the Works by the Project Manager, in accordance with **CC 49.1**, half the total amount retained shall be repaid to the Contractor and half when the Defects Liability Period has passed and the Project Manager has certified that all Defects notified by the Project Manager to the Contractor before the end of this period have

been corrected. The Contractor may substitute retention money with an “on demand” Bank guarantee.

44. Liquidated Damages and Bonuses

- 44.1 The Contractor shall pay liquidated damages to the Employer at the rate per day stated in **CC 2.14** for each day that the Completion Date is later than the Intended Completion Date. The total amount of liquidated damages shall not exceed the amount defined in **CC 2.15**. The Employer may deduct liquidated damages from payments due to the Contractor. Payment of liquidated damages shall not affect the Contractor’s liabilities.
- 44.2 If the Intended Completion Date is extended after liquidated damages have been paid, the Project Manager shall correct any overpayment of liquidated damages by the Contractor by adjusting the next payment certificate. The Contractor shall be paid interest on the overpayment, calculated from the date of payment to the date of repayment, at the rates specified in **CC 39.1**.
- 44.3 The Contractor shall be paid a Bonus calculated at the rate per calendar day stated in **CC 2.16** for each day (less any days for which the Contractor is paid for acceleration) that the Completion is earlier than the Intended Completion Date. The Project Manager shall certify that the Works are complete, although they may not be due to be complete

45. Advance Payment

- 45.1 The Employer shall make advance payment to the Contractor in the amount specified in **CC 2.17**, against provision by the Contractor, if required in **CC 2.17**, of an Unconditional Bank Guarantee in a form and by a bank acceptable to the Employer in amounts and currencies equal to the advance payment. The Guarantee shall remain effective until the advance payment has been repaid, but the amount of the Guarantee shall be progressively reduced by the amounts repaid by the Contractor.
- 45.2 The Contractor is to use the advance payment only to pay for Equipment, Plant, Materials, and mobilization expenses required specifically for execution of the Contract. The Contractor shall demonstrate that advance payment has been used in this way by supplying copies of invoices or other documents to the Project Manager.
- 45.3 The advance payment shall be repaid by deducting proportionate amounts from payments otherwise due to the

Contractor, following the schedule of completed percentages of the Works on a payment basis. No account shall be taken of the advance payment or its repayment in assessing valuations of work done, Variations, price adjustments, Compensation Events, Bonuses, or Liquidated Damages.

46. Performance Security

46.1 The Performance Security, if required in **CC 2.18**, shall be provided to the Employer no later than the date specified in the Letter of Acceptance and shall be issued in an amount specified in **CC 2.18**, by a bank or surety acceptable to the Employer, and denominated in the types and proportions of the currencies in which the Contract Price is payable. The Performance Security shall be valid until a date 28 days from the date of issue of the Certificate of Completion in the case of a Bank Guarantee, and until one year from the date of issue of the Certificate of Completion in the case of a Performance Bond.

47. Dayworks

47.1 If applicable, the Dayworks rates in the Contractor's Quotations shall be used only when the Project Manager has given written instructions in advance for additional work to be paid for in that way.

47.2 All work to be paid for as Dayworks shall be recorded by the Contractor on forms approved by the Project Manager. Each completed form shall be verified and signed by the Project Manager within two days of the work being done.

47.3 The Contractor shall be paid for Dayworks subject to obtaining signed Dayworks forms.

48. Cost of Repairs

48.1 Loss or damage to the Works or Materials to be incorporated in the Works between the Start Date and the end of the Defects Correction periods shall be remedied by the Contractor at the Contractor's cost if the loss or damage arises from the Contractor's acts or omissions.

E. Finishing the Contract

49. Completion

49.1 The Contractor shall request the Project Manager to issue a Certificate of Completion of the Works, and the Project Manager shall do so upon deciding that the whole of the Works is completed.

- 50. Taking Over** 50.1 The Employer shall take over the Site and the Works within 7 (seven) days of the Project Manager's issuing a Certificate of Completion.
- 51. Final Account** 51.1 The Contractor shall supply the Project Manager with a detailed account of the total amount that the Contractor considers payable under the Contract before the end of the Defects Liability Period. The Project Manager shall issue a Defects Liability Certificate and certify any final payment that is due to the Contractor within 56 (fifty six) days of receiving the Contractor's account if it is correct and complete. If it is not, the Project Manager shall issue within 56 (fifty six) days a schedule that states the scope of the corrections or additions that are necessary. If the Final Account is still unsatisfactory after it has been resubmitted, the Project Manager shall decide on the amount payable to the Contractor and issue a payment certificate.
- 52. Operating and Maintenance Manuals** 52.1 If "as built" Drawings and/or operating and maintenance manuals are required, the Contractor shall supply them by the dates stated in **CC 2.19**.
- 52.2 If the Contractor does not supply the Drawings and/or manuals by the dates stated in **CC 2.19**, or they do not receive the Project Manager's approval, the Project Manager shall withhold the amount stated in **CC 2.20** from payments due to the Contractor.
- 53. Termination** 53.1 The Employer or the Contractor may terminate the Contract if the other party causes a fundamental breach of the Contract.
- 53.2 Fundamental breaches of Contract shall include, but shall not be limited to, the following:
- (a) the Contractor stops work for 28 (twenty eight) days when no stoppage of work is shown on the current Program and the stoppage has not been authorized by the Project Manager;
 - (b) the Project Manager instructs the Contractor to delay the progress of the Works, and the instruction is not withdrawn within 28 (twenty eight) days;
 - (c) the Employer or the Contractor is made bankrupt or goes into liquidation other than for a reconstruction or amalgamation;

- (d) a payment certified by the Project Manager is not paid by the Employer to the Contractor within 84 (eighty four) days of the date of the Project Manager's certificate;
- (e) the Project Manager gives Notice that failure to correct a particular Defect is a fundamental breach of Contract and the Contractor fails to correct it within a reasonable period of time determined by the Project Manager;
- (f) the Contractor does not maintain a Security, which is required;
- (g) the Contractor has delayed the completion of the Works for which the maximum amount of liquidated damages can be paid, as specified in **CC 2.15**; or
- (h) if the Contractor, in the judgment of the Employer has engaged in Fraud and Corruption, as defined in paragraph 2.2 a of the Appendix A to the CC, in competing for or in executing the Contract, then the Employer may, after giving 14 (fourteen) days written notice to the Contractor, terminate the Contract and expel him from the Site.

53.3 Notwithstanding the above, the Employer may terminate the Contract for convenience.

53.4 If the Contract is terminated, the Contractor shall stop work immediately, make the Site safe and secure, and leave the Site as soon as reasonably possible.

53.5 When either party to the Contract gives notice of a breach of Contract to the Project Manager for a cause other than those listed under **CC 53.2** above, the Project Manager shall decide whether the breach is fundamental or not.

54. Payment upon Termination

54.1 If the Contract is terminated because of a fundamental breach of Contract by the Contractor, the Project Manager shall issue a certificate for the value of the work done and Materials ordered less advance payments received up to the date of the issue of the certificate and less the percentage specified in **CC 2.21** to apply to the value of the work not completed. Additional Liquidated Damages shall not apply. If the total amount due to the Employer exceeds any payment due to the Contractor, the difference shall be a debt payable to the Employer.

54.2 If the Contract is terminated for the Employer's convenience or because of a fundamental breach of Contract by the Employer, the Project Manager shall issue a certificate for the value of the work done, Materials ordered, the reasonable cost of removal of Equipment, repatriation of the Contractor's personnel employed solely on the Works, and the Contractor's costs of protecting and securing the Works, and less advance payments received up to the date of the certificate.

55. Property

55.1 All Materials on the Site, Plant, Equipment, Temporary Works, and Works shall be deemed to be the property of the Employer if the Contract is terminated because of the Contractor's default.

56. Release from Performance

56.1 If the Contract is frustrated by the outbreak of war or by any other event entirely outside the control of either the Employer or the Contractor, the Project Manager shall certify that the Contract has been frustrated. The Contractor shall make the Site safe and stop work as quickly as possible after receiving this certificate and shall be paid for all work carried out before receiving it and for any work carried out afterwards to which a commitment was made.

57. Suspension of Bank Loan or Credit

57.1 In the event that the Bank suspends the Loan or Credit to the Employer, from which part of the payments to the Contractor are being made:

- (a) The Employer is obligated to notify the Contractor of such suspension within 7 (seven) days of having received the Bank's suspension notice.
- (b) If the Contractor has not received sums due to it within the 28 (twenty eight) days for payment provided for in **CC 39.1**, the Contractor may immediately issue a 14 (fourteen)-day termination notice.

APPENDIX A TO CONTRACT CONDITIONS

Fraud and Corruption

1. Purpose

1.1 The Bank's Anti-Corruption Guidelines and this annex apply with respect to procurement under Bank Investment Project Financing operations.

2. Requirements

2.1 The Bank requires that Borrowers (including beneficiaries of Bank financing); bidders (applicants/proposers), consultants, contractors and suppliers; any sub-contractors, sub-consultants, service providers or suppliers; any agents (whether declared or not); and any of their personnel, observe the highest standard of ethics during the procurement process, selection and contract execution of Bank-financed contracts, and refrain from Fraud and Corruption.

2.2 To this end, the Bank:

a. Defines, for the purposes of this provision, the terms set forth below as follows:

- i. "corrupt practice" is the offering, giving, receiving, or soliciting, directly or indirectly, of anything of value to influence improperly the actions of another party;
- ii. "fraudulent practice" is any act or omission, including misrepresentation, that knowingly or recklessly misleads, or attempts to mislead, a party to obtain financial or other benefit or to avoid an obligation;
- iii. "collusive practice" is an arrangement between two or more parties designed to achieve an improper purpose, including to influence improperly the actions of another party;
- iv. "coercive practice" is impairing or harming, or threatening to impair or harm, directly or indirectly, any party or the property of the party to influence improperly the actions of a party;
- v. "obstructive practice" is:
 - (a) deliberately destroying, falsifying, altering, or concealing of evidence material to the investigation or making false statements to investigators in order to materially impede a Bank investigation into allegations of a corrupt, fraudulent, coercive, or collusive practice; and/or threatening, harassing, or intimidating any party to prevent it from disclosing its

- knowledge of matters relevant to the investigation or from pursuing the investigation; or
- (b) acts intended to materially impede the exercise of the Bank's inspection and audit rights provided for under paragraph 2.2 e. below.
- b. Rejects a proposal for award if the Bank determines that the firm or individual recommended for award, any of its personnel, or its agents, or its sub-consultants, sub-contractors, service providers, suppliers and/ or their employees, has, directly or indirectly, engaged in corrupt, fraudulent, collusive, coercive, or obstructive practices in competing for the contract in question;
- c. In addition to the legal remedies set out in the relevant Legal Agreement, may take other appropriate actions, including declaring misprocurement, if the Bank determines at any time that representatives of the Borrower or of a recipient of any part of the proceeds of the loan engaged in corrupt, fraudulent, collusive, coercive, or obstructive practices during the procurement process, selection and/or execution of the contract in question, without the Borrower having taken timely and appropriate action satisfactory to the Bank to address such practices when they occur, including by failing to inform the Bank in a timely manner at the time they knew of the practices;
- d. Pursuant to the Bank's Anti-Corruption Guidelines and in accordance with the Bank's prevailing sanctions policies and procedures, may sanction a firm or individual, either indefinitely or for a stated period of time, including by publicly declaring such firm or individual ineligible (i) to be awarded or otherwise benefit from a Bank-financed contract, financially or in any other manner;¹ (ii) to be a nominated² sub-contractor, consultant, manufacturer or supplier, or service provider of an otherwise eligible firm being awarded a Bank-financed contract; and (iii) to receive the proceeds of any loan made by the Bank or otherwise to participate further in the preparation or implementation of any Bank-financed project;
- e. Requires that a clause be included in bidding/request for proposals documents and in contracts financed by a Bank loan, requiring (i) bidders (applicants/proposers), consultants, contractors, and suppliers, and their sub-contractors, sub-consultants, service providers, suppliers, agents personnel, permit the Bank to inspect³ all

¹ For the avoidance of doubt, a sanctioned party's ineligibility to be awarded a contract shall include, without limitation, (i) applying for pre-qualification, expressing interest in a consultancy, and bidding, either directly or as a nominated sub-contractor, nominated consultant, nominated manufacturer or supplier, or nominated service provider, in respect of such contract, and (ii) entering into an addendum or amendment introducing a material modification to any existing contract.

² A nominated sub-contractor, nominated consultant, nominated manufacturer or supplier, or nominated service provider (different names are used depending on the particular bidding document) is one which has been: (i) included by the bidder in its pre-qualification application or bid because it brings specific and critical experience and know-how that allow the bidder to meet the qualification requirements for the particular bid; or (ii) appointed by the Borrower.

³ Inspections in this context usually are investigative (i.e., forensic) in nature. They involve fact-finding activities undertaken by the Bank or persons appointed by the Bank to address specific matters related to investigations/audits, such as evaluating the veracity of an allegation of possible Fraud and Corruption, through the appropriate mechanisms. Such activity includes but is not limited to: accessing and examining a firm's or individual's financial records and information, and making copies thereof as relevant;

accounts, records and other documents relating to the procurement process, selection and/or contract execution, and to have them audited by auditors appointed by the Bank.

accessing and examining any other documents, data and information (whether in hard copy or electronic format) deemed relevant for the investigation/audit, and making copies thereof as relevant; interviewing staff and other relevant individuals; performing physical inspections and site visits; and obtaining third party verification of information.

Sample Letter of Award of Contract

[modify as appropriate]

[use letterhead paper of the Employer]

[date].

To: **[name and address of the Contractor]**

Subject: **[Notification of Award Contract No]**.

This is to notify you that your Quotation dated **[insert date]** for execution of the **[insert name of the contract and identification number, as given in the CC]** for the Accepted Contract Amount of **[insert amount in numbers and words and name of currency]**, as corrected and modified in accordance with the Request for Quotations is hereby accepted by our Agency.

Please find enclosed herewith the Contract. You are requested to sign the contract within **[insert no of days]**.

[Insert the following only if Performance Security is required:] "You are also requested to furnish a Performance Security within **[insert no of days]** in accordance with the Conditions of the Contract, using for that purpose one of the Performance Security Forms attached to the Contract.

Authorized Signature: _____

Name and Title of Signatory: _____

Name of Agency: _____

Attachment: Contract